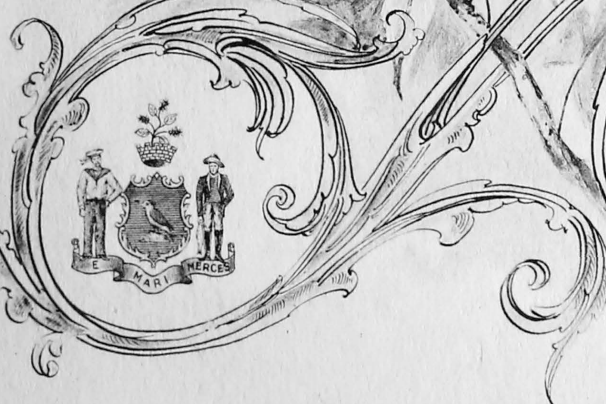
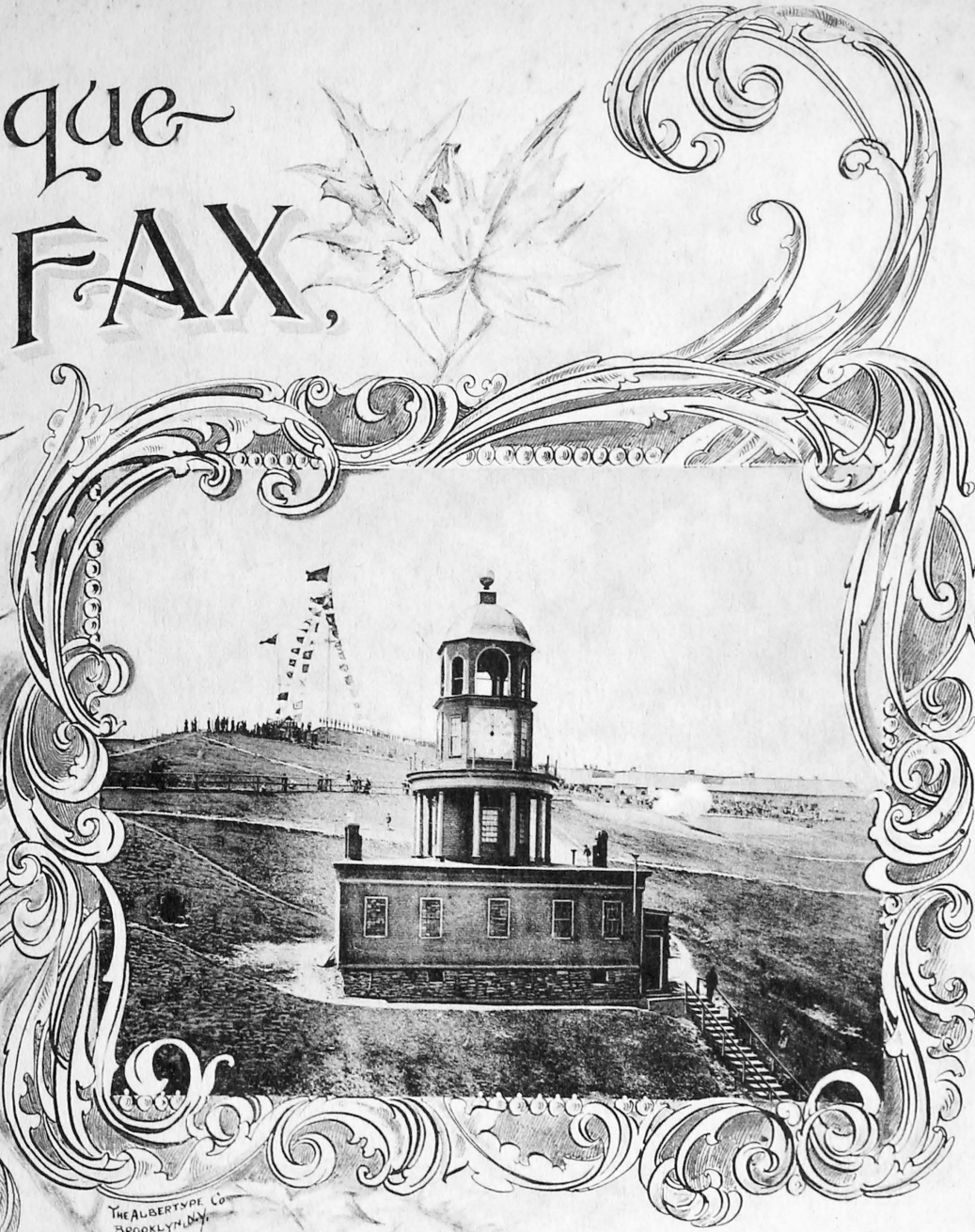


Picturesque

HALIFAX,

N.S.



THE ALBERTYPE CO.
BROOKLYN, N.Y.

PICTURESQUE 

~ Halifax, N. S. ~



Photo-Gravures



THE ALBERTYPE CO.,
BROOKLYN, N. Y.

PUBLISHED BY
C. H. RUGGLES & CO.,
BOOKSELLERS AND STATIONERS,
BARRINGTON STREET, HALIFAX, N. S.

Harbour and McNab's Island, looking South



Dartmouth.

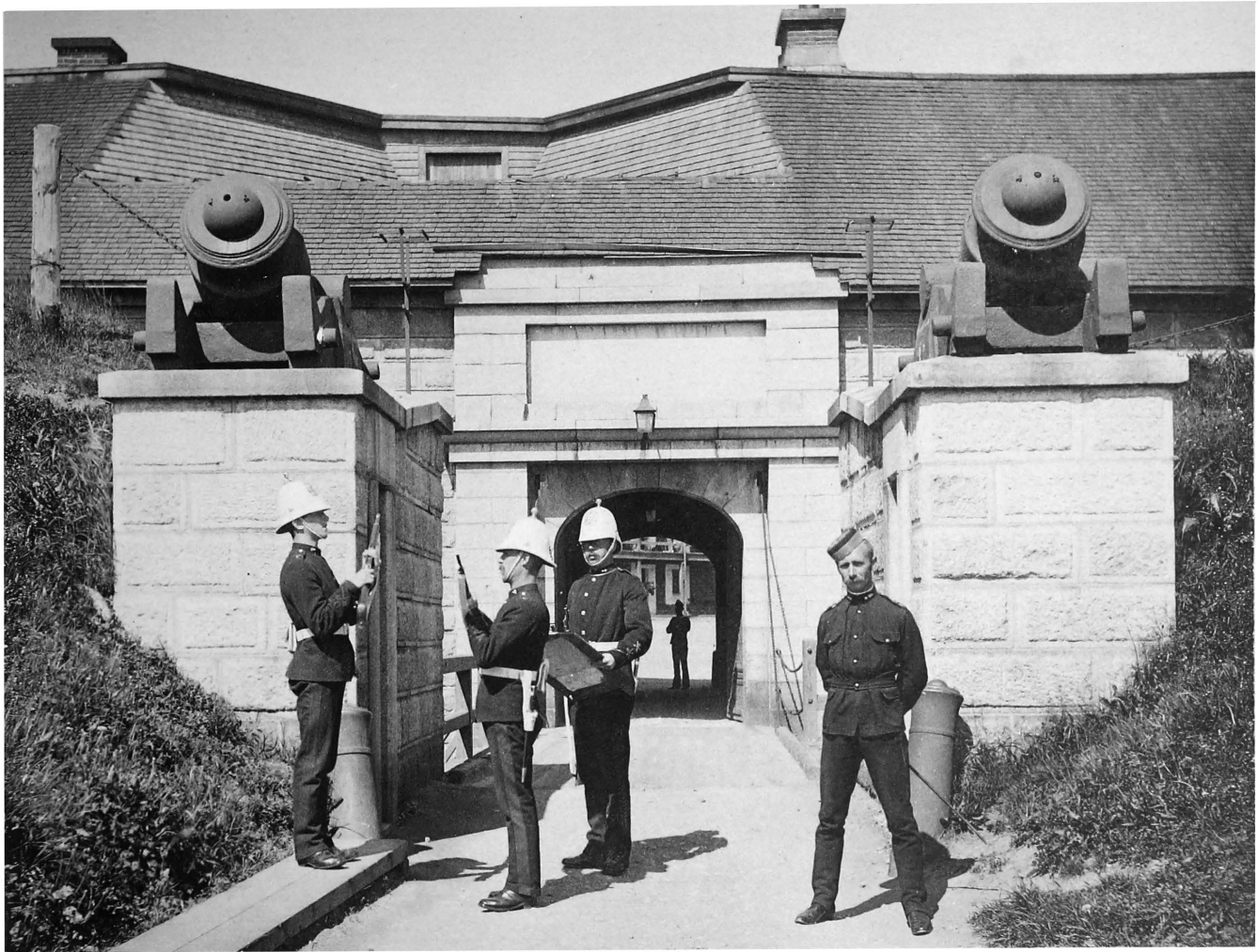


Insane Asylum.

Sugar Refineries.



George's Island.



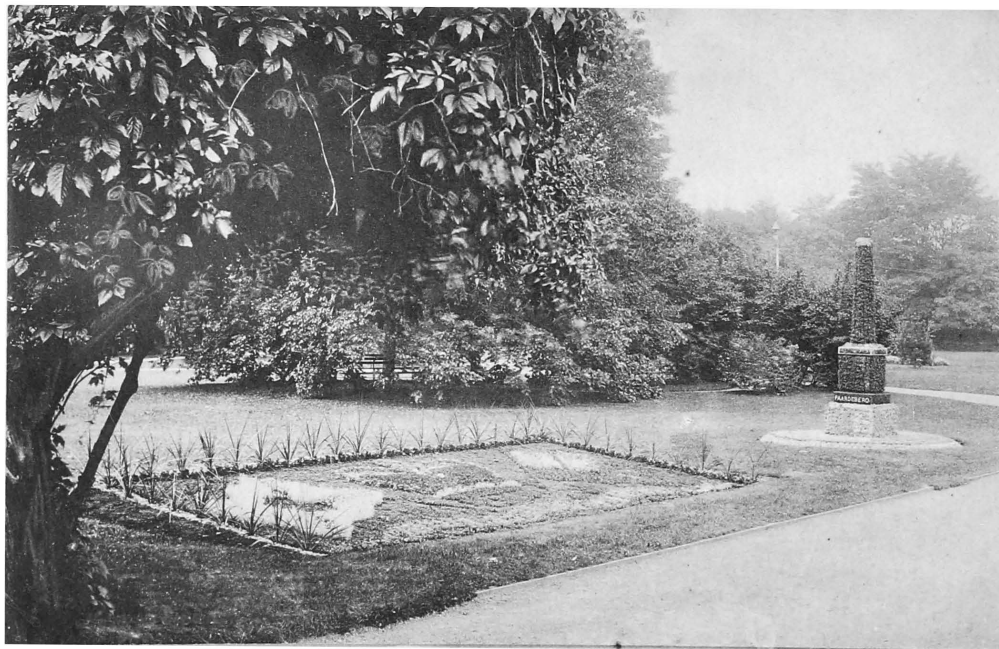
ENTRANCE—THE CITADEL



BAND STAND—PUBLIC GARDENS.



FOUNTAIN—PUBLIC GARDENS.

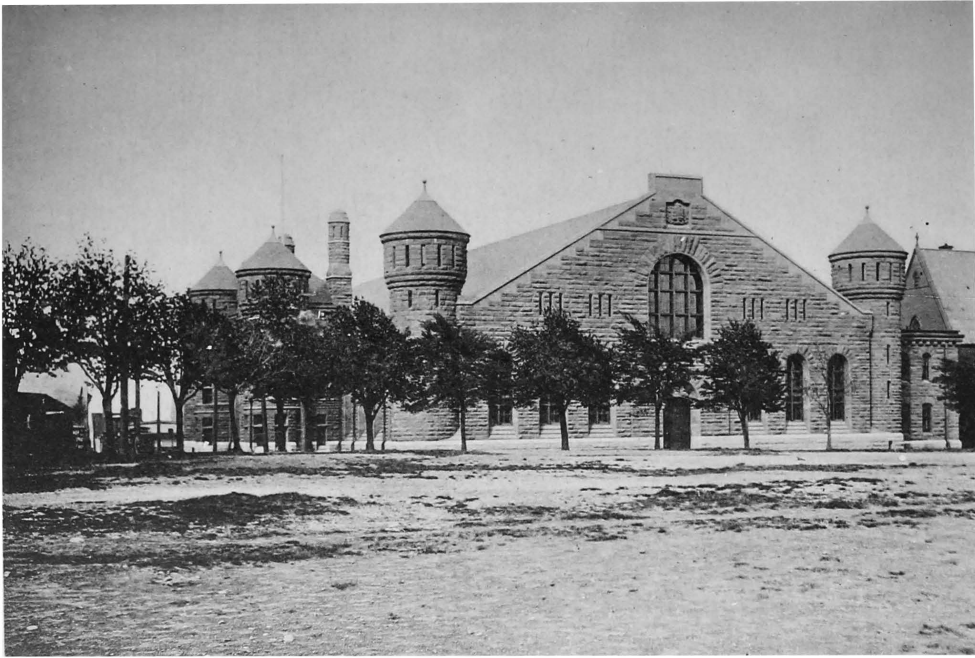


PATRIOTIC FLOWER BED AND PAADENBURG MONUMENT—PUBLIC GARDENS.

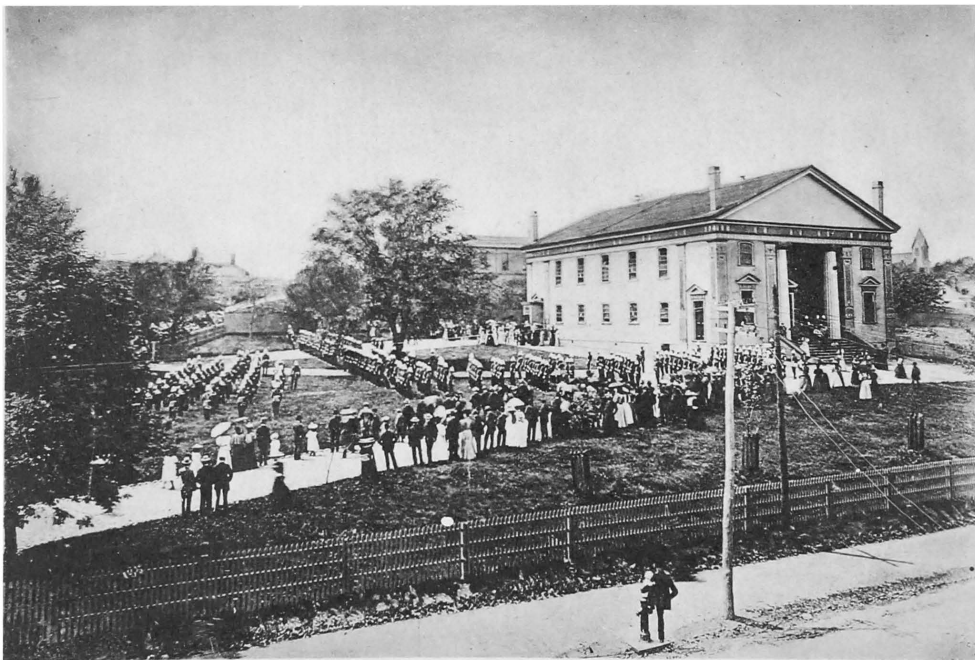


OLD TOWN CLOCK AND THE CITADEL.

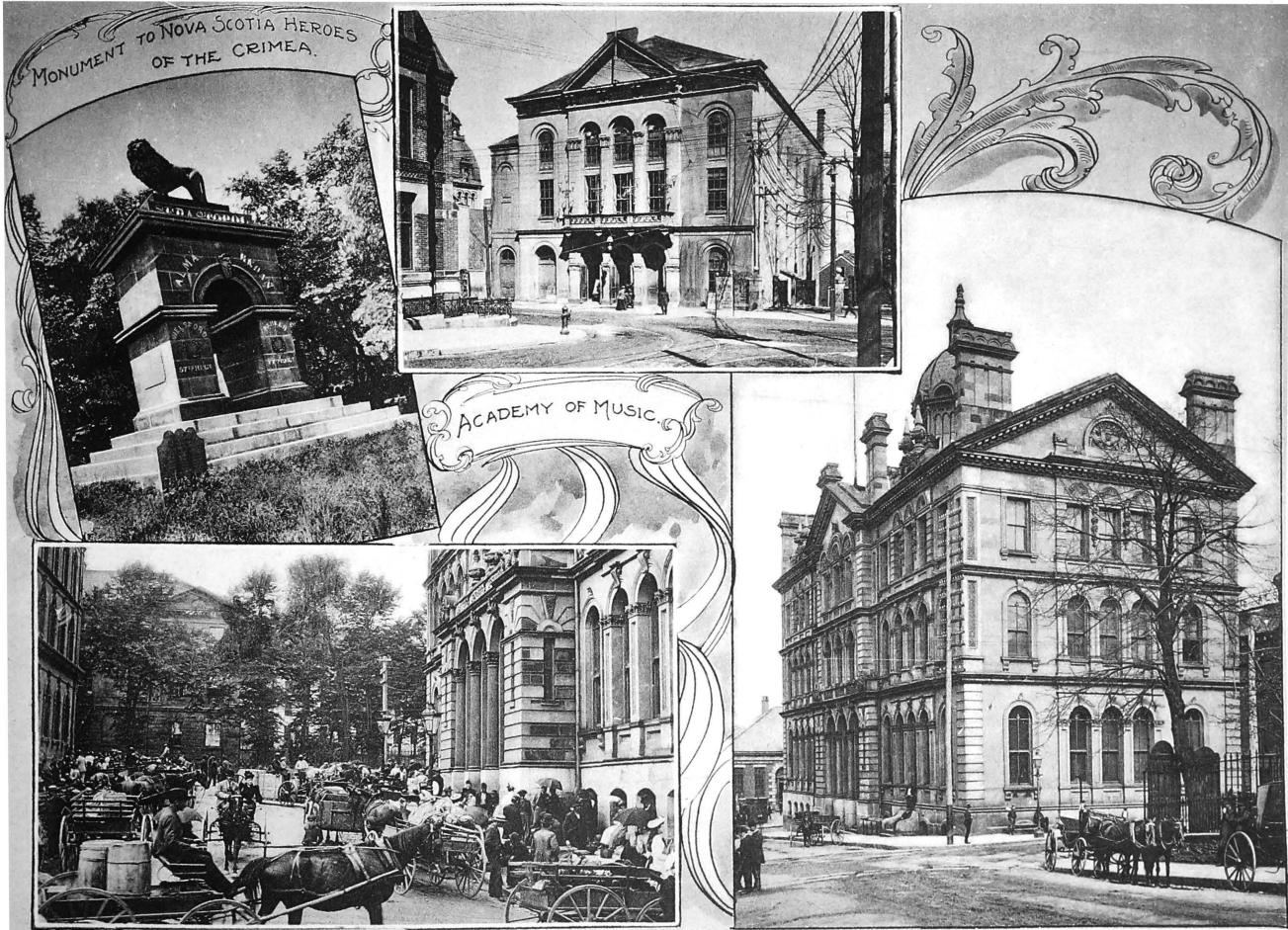
Firing Royal Salute on the Queen's Birthday.



ARMOURIES.

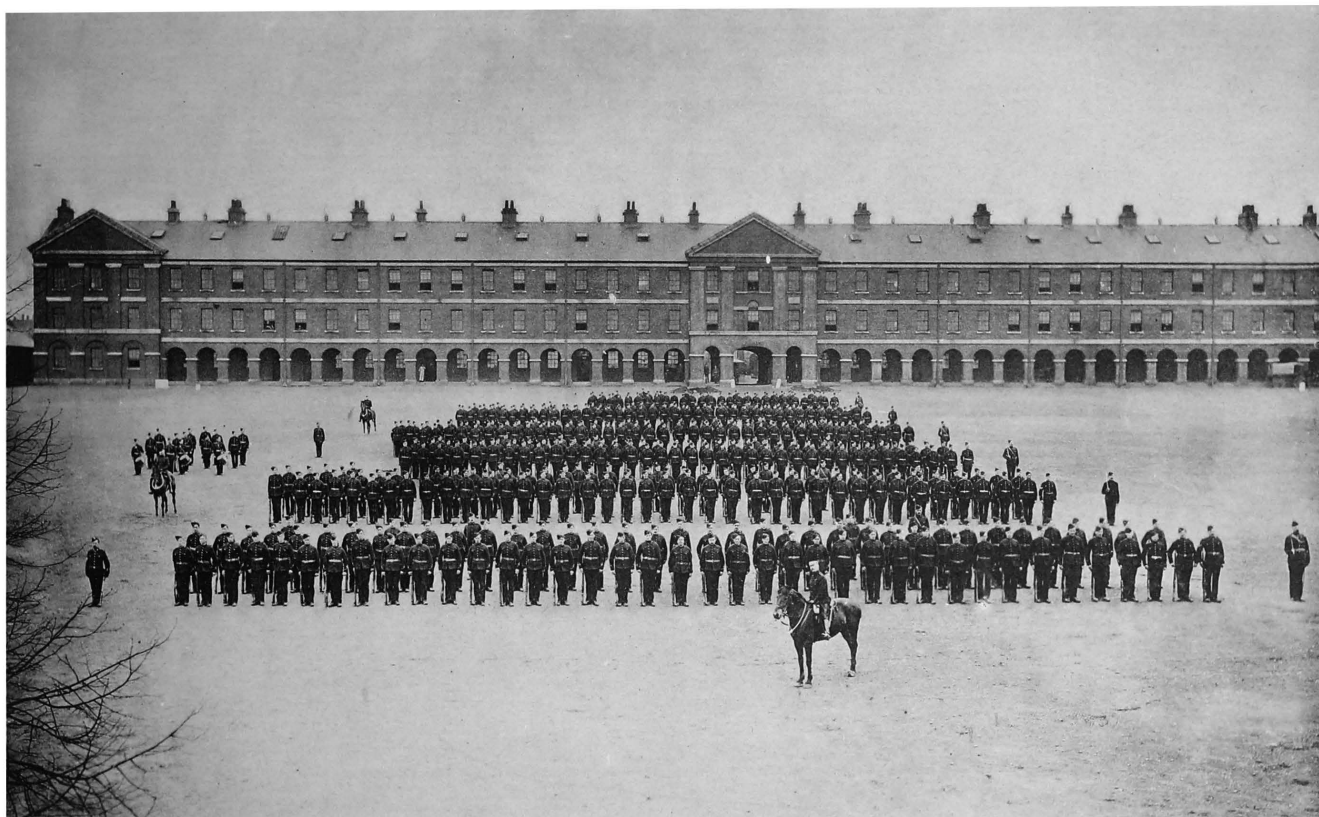


GARRISON CHAPEL

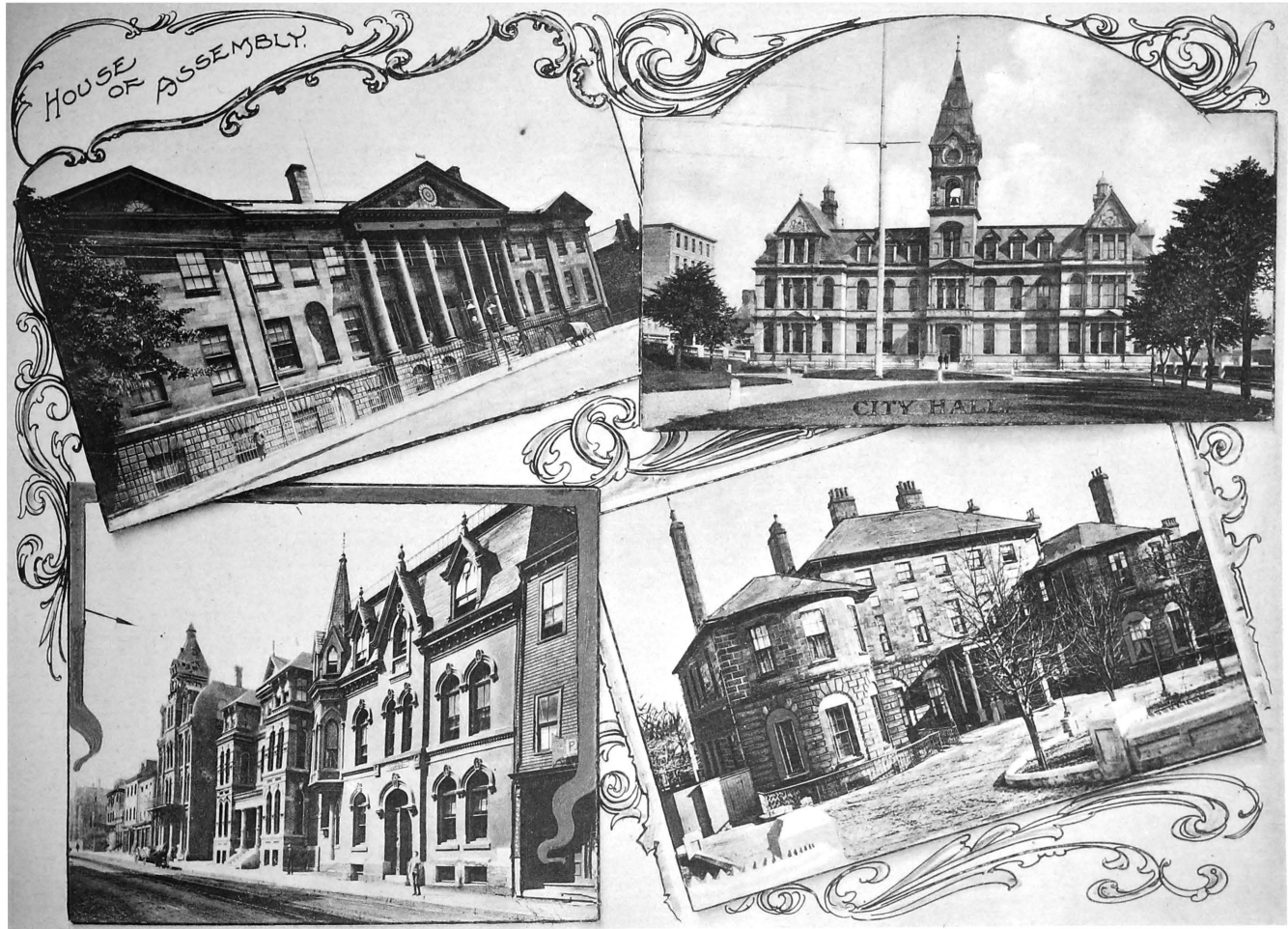


Market Day.

Post Office and Custom House.

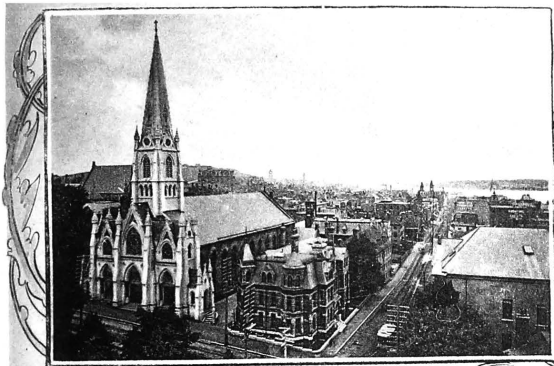


ROYAL CANADIAN REGIMENT INFANTRY, 3rd PROVISIONAL BATTALLION.



Young Men's Hall City Club, Church of England Institute.

Government House.



ST. MARY'S CHURCH



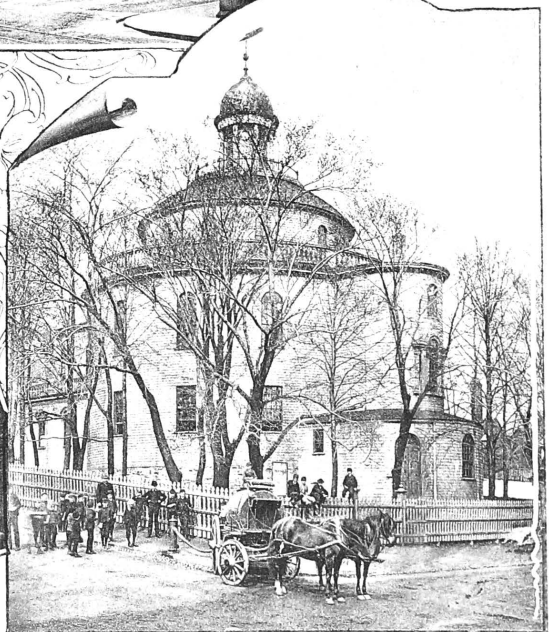
ST. PAUL'S
CATHEDRAL



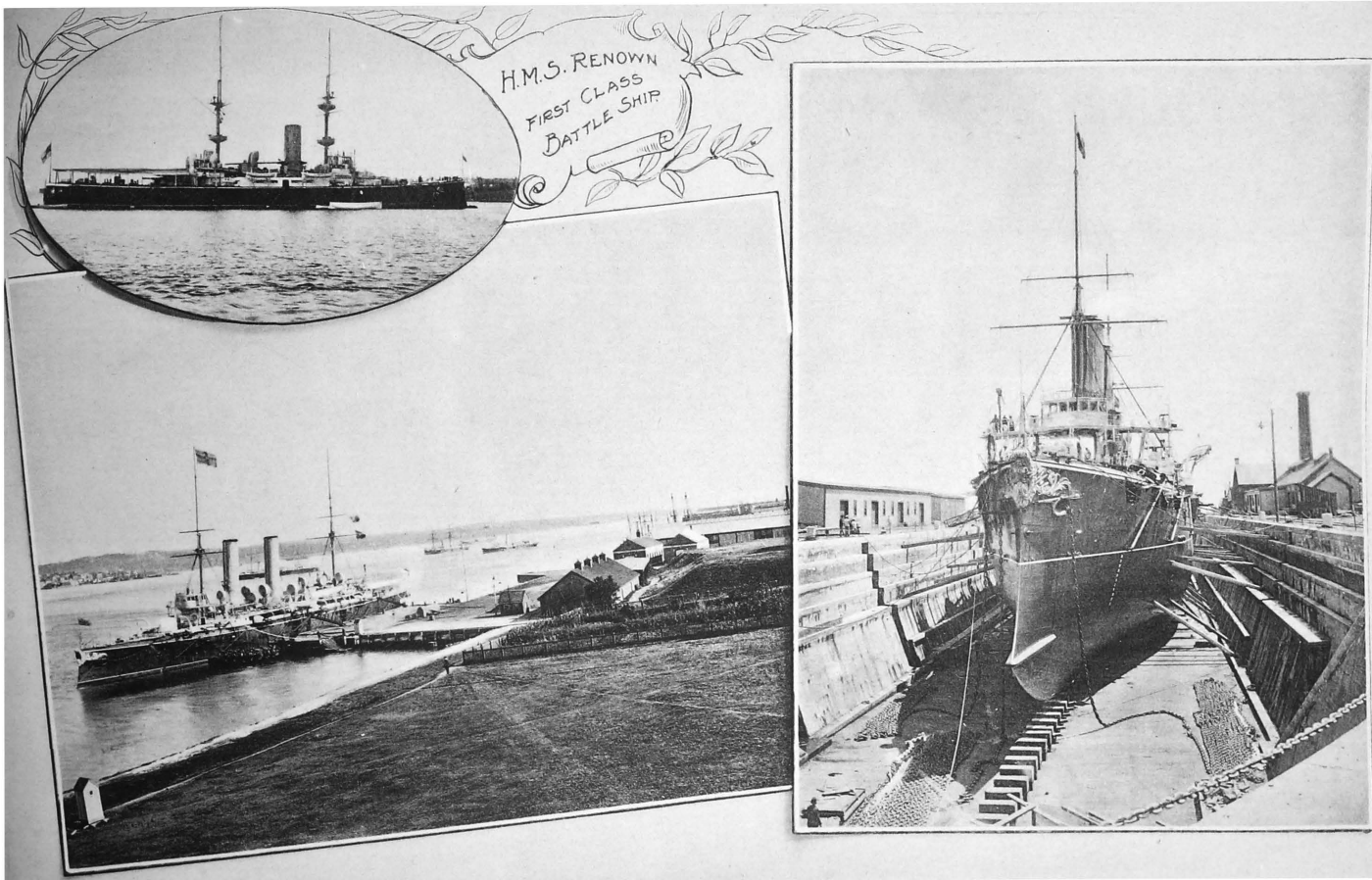
St. Mathew's Presbyterian Church.



Old Dutch Church, 1735.

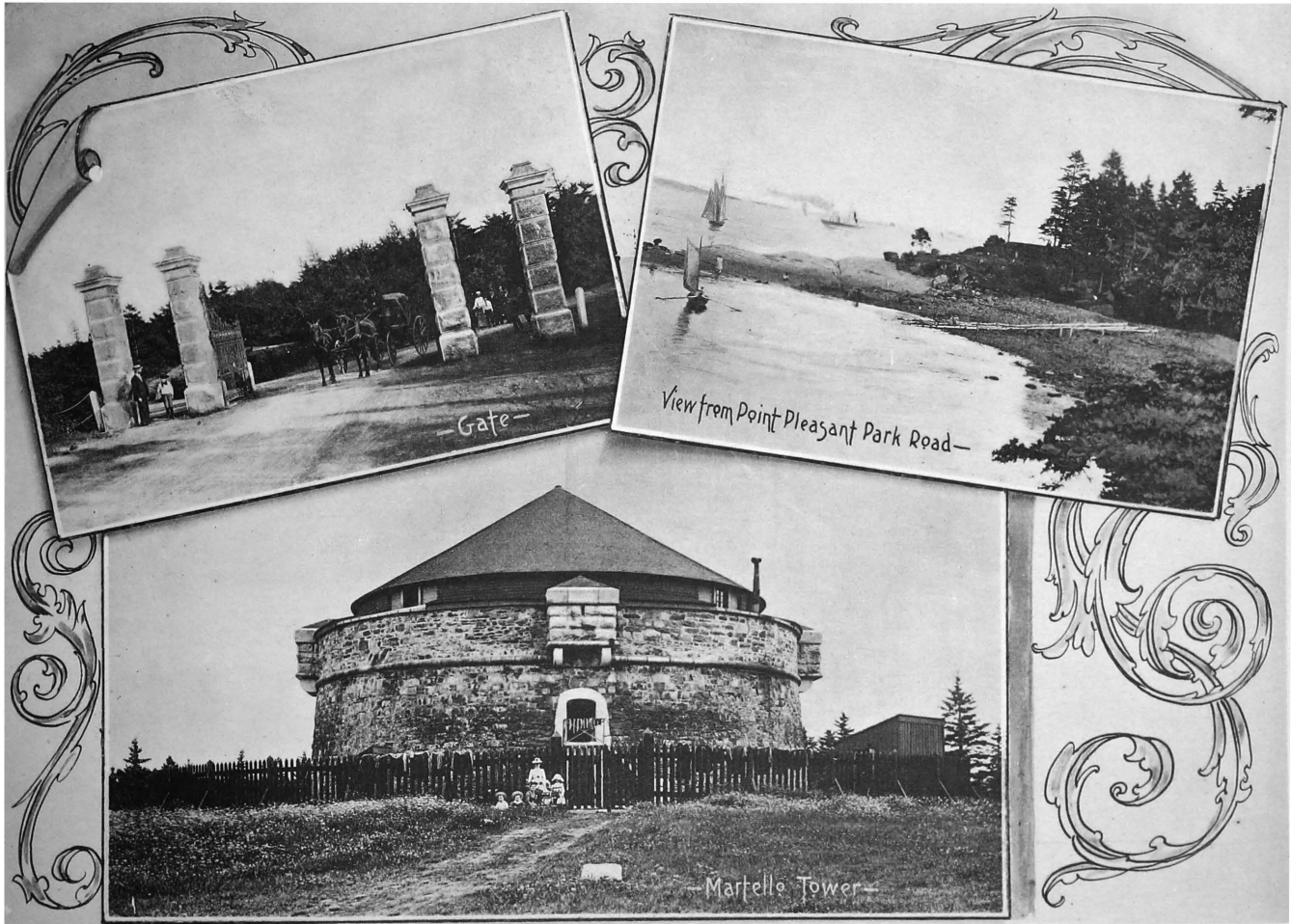


St. George's Episcopal Church.



H. M. S. Crescent and Dock Yard.

H. M. S. Crescent in Dry Dock.



POINT PLEASANT PARK.



VICTORIA GENERAL HOSPITAL.

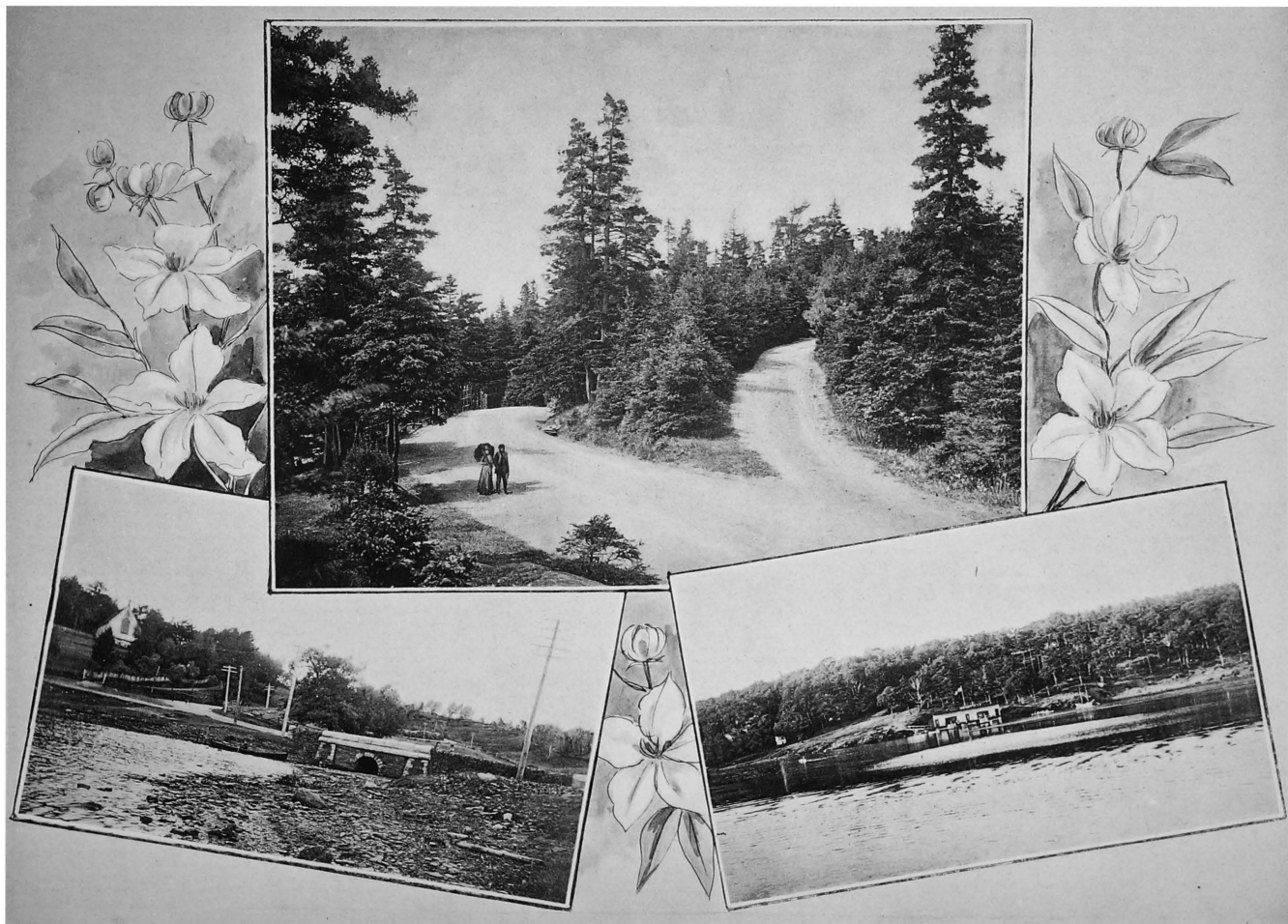
DALHOUSIE COLLEGE.



Deaf and Dumb Asylum.



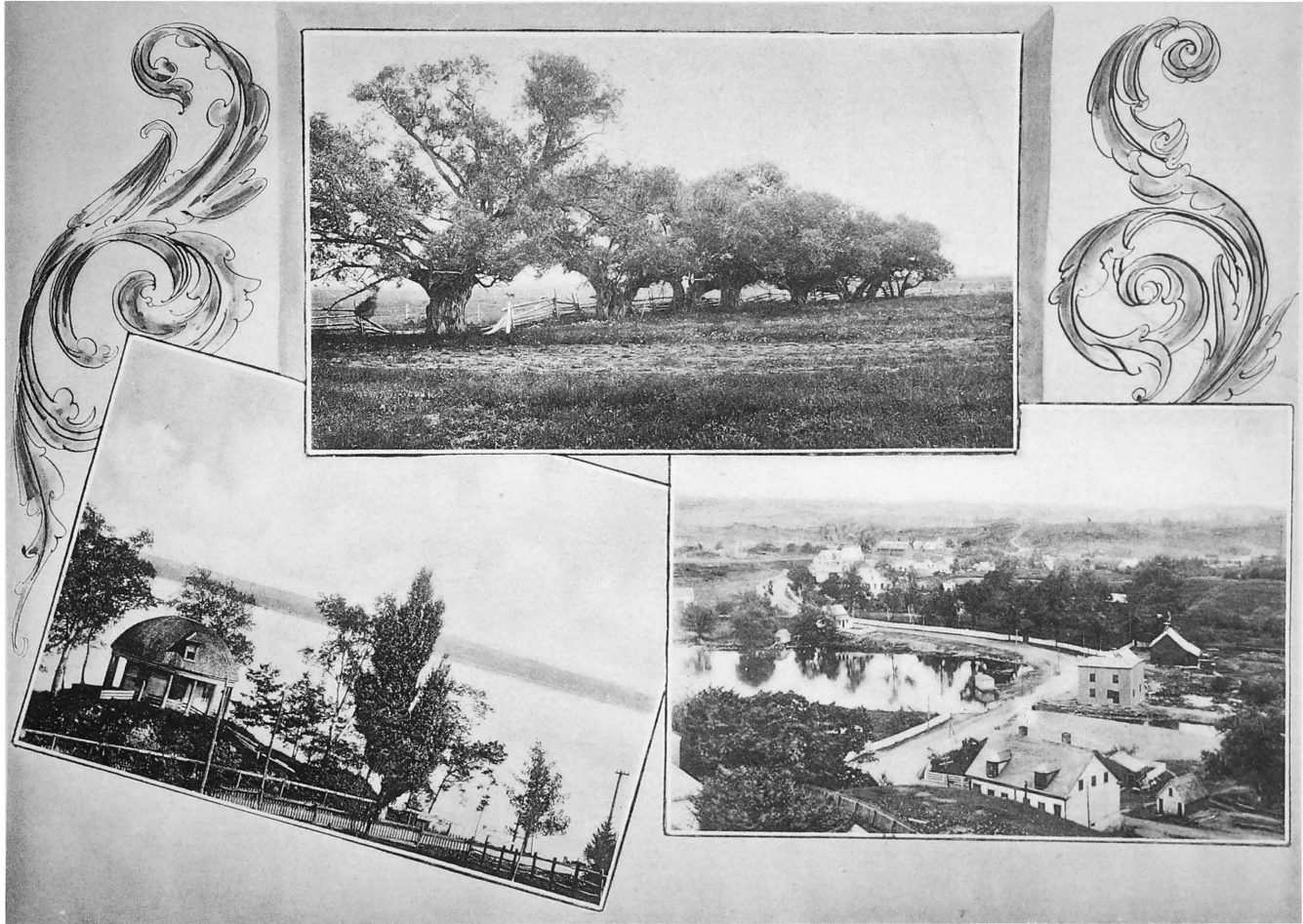
Ladies' College.



Head of North West Arm.

Drive in Point Pleasant Park.

Scene on North West Arm.



Old French Willows, Evangeline's Home.

Princes' Lodge.

Waverly, 10 Miles from Halifax.