

Toronto Public Library

(Pamphlet Collection)

P 917.13

158 N 372
Canadian
HISTORY

Through the Gorge
of Niagara



THROUGH THE GORGE
OF NIAGARA

PHOTO-GRAVURES

COPYRIGHT, 1896 BY THE NIAGARA FALLS AND LEWISTON R. R.,
BUFFALO, N. Y.

UNSURPASSED facilities are offered by the **Niagara Falls and Lewiston Railroad**, better known as the "*Great Gorge Route*," for viewing the scenery about the Falls. This popular road starts at the steel observation tower at the entrance to Prospect Park, passes all the leading hotels and depots, and then descending the river bank on an easy grade, it runs the entire length of the beautiful gorge within a few feet of the water's edge. Never before have visitors to the Falls had such pleasing and cheap means of transportation at their command, and never before have they had the facilities to see all the delightful spots along the gorge from such pleasing points passed by the "*Great Gorge Road*." What before cost dollars to see is now enjoyed for a few cents, and each passenger is impressed with the conviction that Electricity has done something for his benefit. The trip over this road is one of wondrous beauty. The road itself is a marvel. The falls are seen in all their beauty set in a frame of banks and sky. The great bridges have never been seen from such an advantageous point. Peacefully the river flows along and then suddenly the whirlpool rapids are in full view. For their whole length the cars run close to them. High in the air they toss and lash themselves in fury indescribable. The whirlpool, the great, mysterious river pocket, is seen at its best in its silent grandeur. The remarkable turn in the river's course is startling, and then the sublimity of the *Devil's Hole* or Lower Rapids commands attention. The banks are glorious. Oh, what a scene! So wild! So beautiful! As passengers are allowed to stop off at all stations, they can visit the *Devil's Hole*, that weird and mighty cavern famed in the legends of the Red Men. Its history is interesting. From this point the gorge widens. The ruffled waters disappear. Soon you are in the heart of an historic locality. Across the river are Queenston Heights and Brock's Monument. The wreck of the old Lewiston bridge hangs suspended over the river. High above the car is the site of old Fort Gray. Then the car sweeps into the historic town Lewiston. The river here is calm and navigable. Cars run right to the dock and close connection is made with boats to and from Toronto and with trolley cars for Fort Niagara.



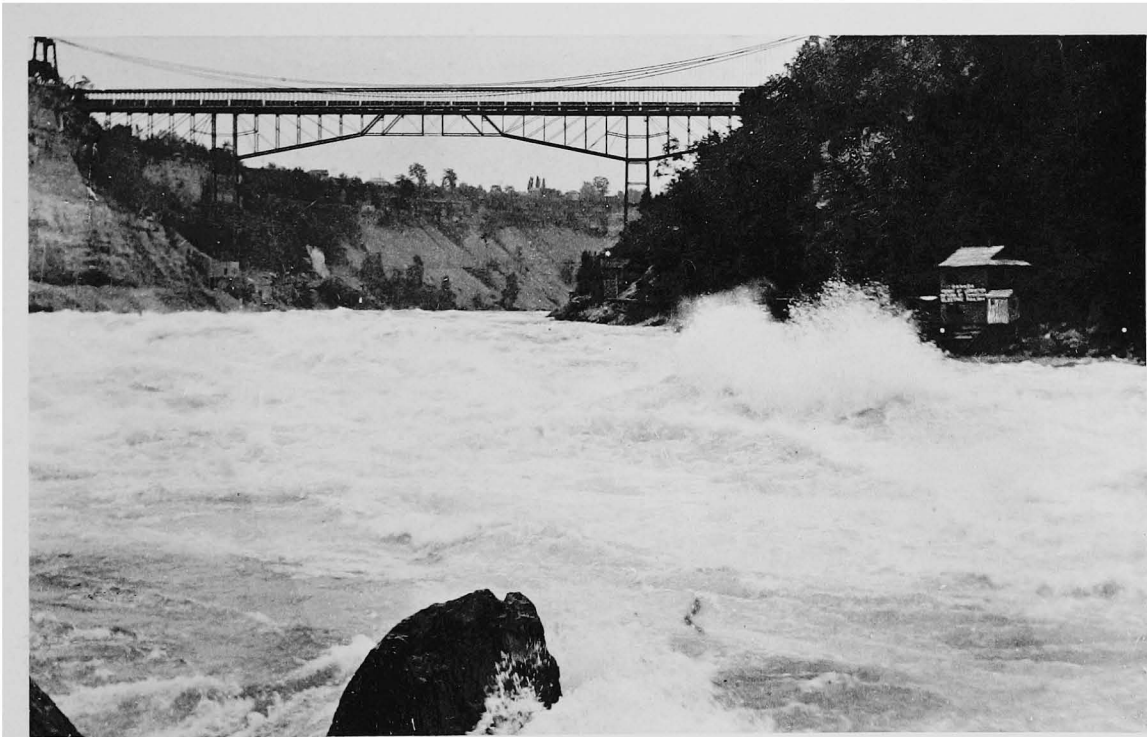
ENTRANCE OF THE GORGE.



CANTILEVER AND SUSPENSION RAILWAY BRIDGES.



VIEW FROM GORGE ROAD TOWARD HORSESHOE FALL.



WHIRLPOOL RAPIDS.



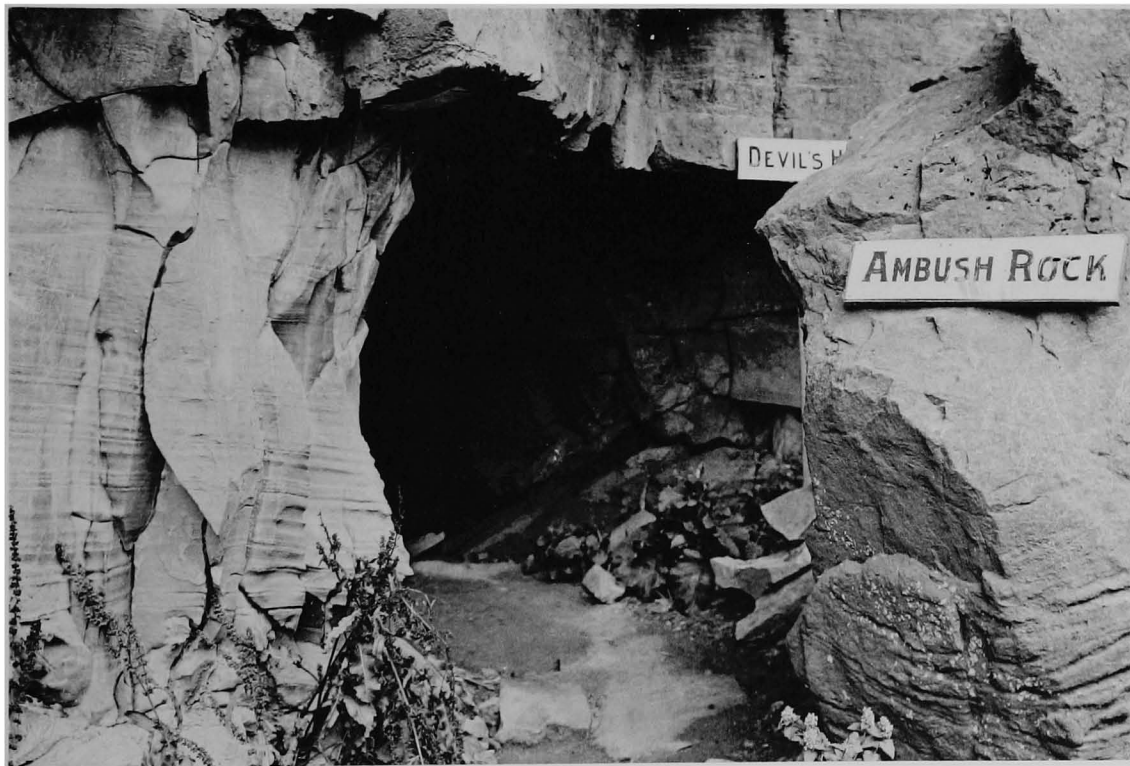
THE BUTTERY—WHIRLPOOL RAPIDS.



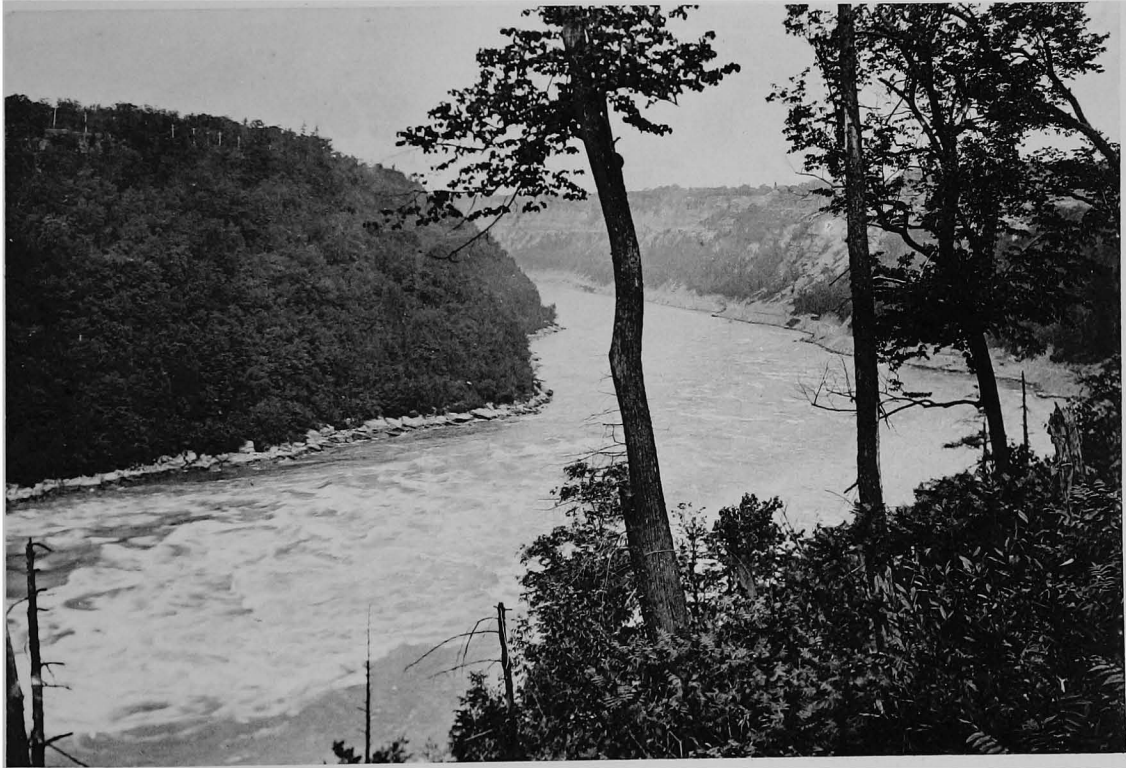
LOWER GORGE AND THE WHIRLPOOL.



THE SENTINELS.



DEVIL'S HOLE.



DOWN THE GORGE, FROM THE BATTLEFIELD.

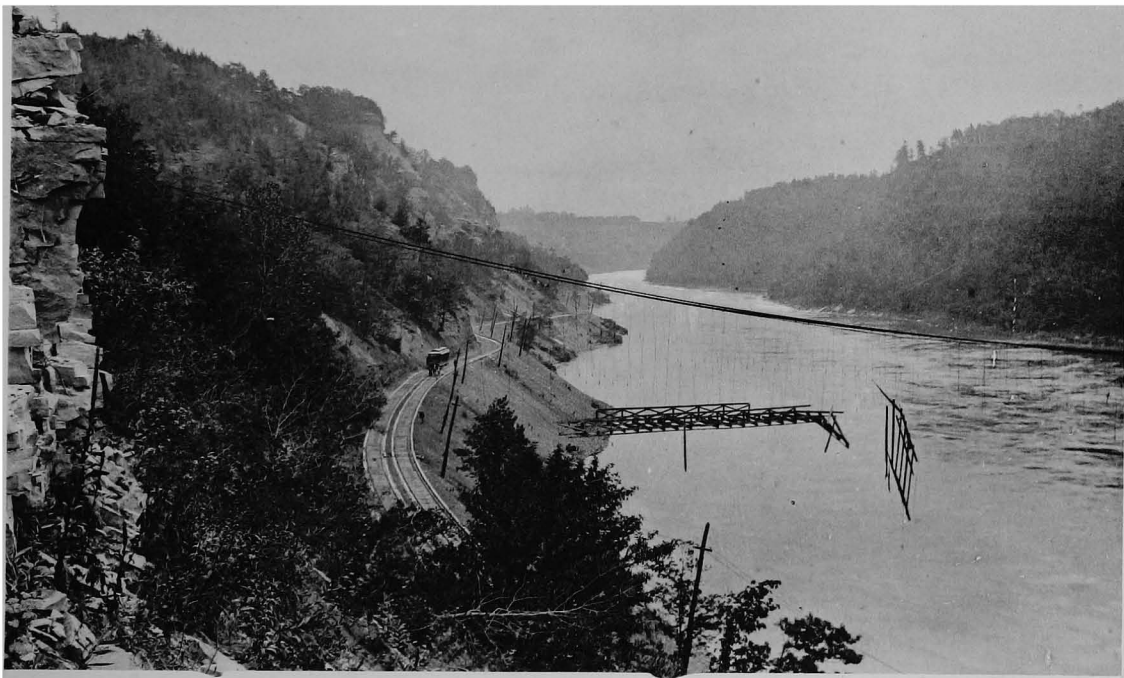


THE BLOODY RUN.

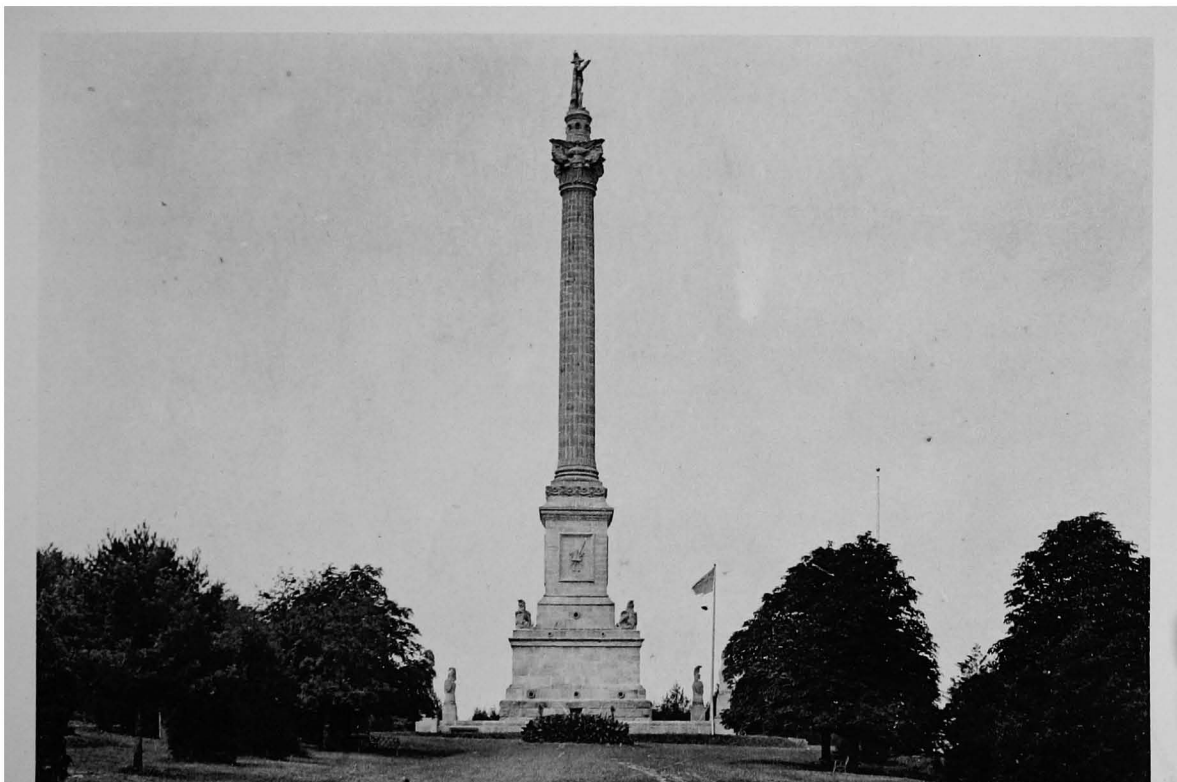
NIAGARA UNIVERSITY.



THE BATTLEFIELD AND BRINK OF DEVIL'S RUN.



VIEW UP THE LOWER GORGE—LEWISTON SUSPENSION BRIDGE.



BROCK MONUMENT—QUEENSTON HEIGHTS.



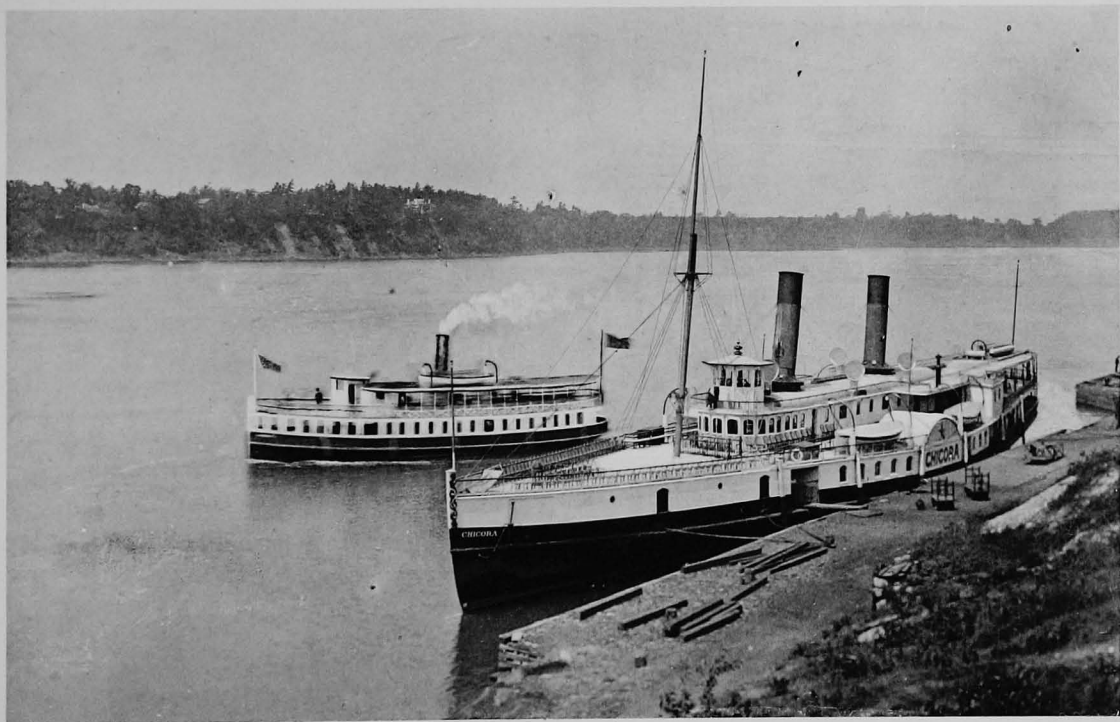
QUEENSTON.

LEWISTON.

LOWER NIAGARA RIVER.



OLD FRONTIER HOUSE AT LEWISTON.



STEAMER "CHICORA" AND FERRYBOAT AT LEWISTON.

