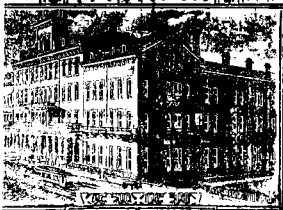


QUEEN'S HOTEL
TRAVELERS'
GUIDE



FOR THE CITY OF

TORONTO



With a List of the
PRINCIPAL BUSINESS HOUSES,
and Sketches of prominent
PLACES OF INTEREST.

TORONTO.

1885.



M. STAUNTON & CO.
ARTISTIC
- WALL PAPERS -
LINCROSTA WALTON,
THE NEW WALL DECORATION
THE LARGEST AND FINEST
ASSORTMENT IN THE
DOMINION OF
English, French, and
American
ARTISTIC WALL PAPERS
Warerooms -
4 KING ST WEST
TORONTO

W. A. MURRAY & CO.'S

One of the most interesting sights to strangers
visiting Toronto, is the Great Dry Goods
House of

W. A. MURRAY & CO.,

17, 19, 21, 23, 25 & KING ST. EAST.

Their Stock of Silks, Velvets, Dress Goods,
Laces, Gloves, Hosiery, Underwear and Fancy
Goods is simply immense, and always a Grand
Display of Ready-made Costumes, Mantles,
Ulsters, Millinery and Ladies' Under-clothing;
also Gentlemen's Clothing Made to Order in
first-class style, on a few hours notice, at

W. A. MURRAY & CO'S.

TORONTO BANKS AND WHERE THEY
ARE SITUATED.

Assistant Receiver General's Office, Toronto St.

Bank of British North America, cor. Yonge and
Wellington Streets.

Bank of Montreal, cor. Yonge and Front Sts.

Bank of Toronto, cor. Church and Wellington
Streets.

Canadian Bank of Commerce, 59 Yonge St.

Dominion Bank of Canada, cor. King and
Yonge Streets.

Merchants' Bank of Canada, 13 Wellington St.
West.

Molson's Bank, cor. Bay and King Streets.

Ontario Bank, cor. Wellington and Scott Sts.

Quebec Bank, cor. Wellington and Church Sts.

Standard Bank of Canada, cor. Wellington and
Jordan Streets.

Imperial Bank, Wellington Street East.

Federal Bank of Canada, Wellington St. West.

Central Bank of Canada, 51 Yonge Street.

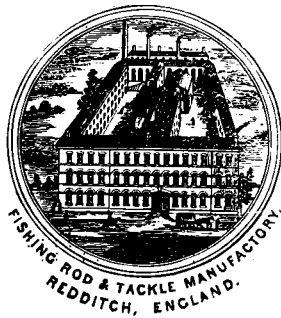
Alcock, Laight & Westwood,

6 Wellington St. West, Toronto.

RODS, BAITs, FLIES,



HOOks, LINEs, ETC.



MANUFACTURERS OF FISHING TACKLE

Rods manufactured on the Premises. Repairing promptly
Attended to

D. S. WILSON ARCHIVE

CHURCHES.

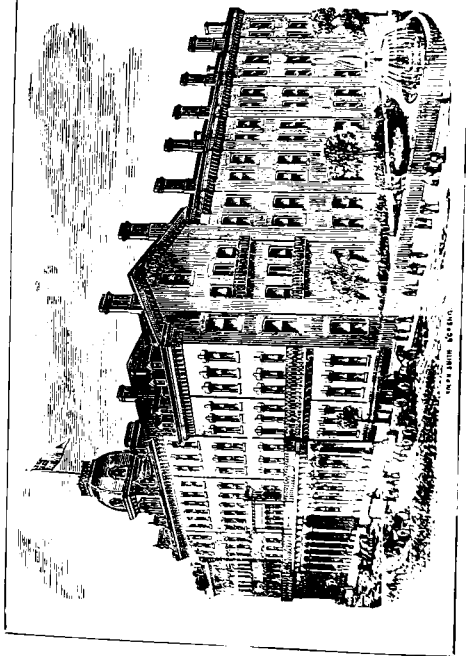
Denomination.	No. of Churches	Principal Church.	Location.
Baptist	12	Jarvis Street	Cor. Jarvis and Gerrard Streets.
Bible Christian	4	Agnes Street	Cor. Agnes and Teraulay Streets.
Catholic Apostolic	1	Catholic Apostolic	Cor. Gould and Victoria Streets.
Congregational	6	Bond Street	Cor Bond Street and Wilton Avenue.
Christadelphian	2	Albert Street	Albert St., north side, near Yonge St.
Episcopal	25	St. James Cathedral	Cor. Church and King Streets.
Episcopal (Reformed)	2	Christ Church	Cor. Simcoe and Caer Howell Streets.
Hebrew Synagogue	1	Hebrew Synagogue	29 Richmond Street East.
Lutheran	1	Lutheran	114 Bond Street.
Methodist	22	Metropolitan	Queen St. E., bet'n Bond & Church Sts.
Presbyterian	16	Old St. Andrews	Cor. King and Simcoe Streets.
Roman Catholic	9	St. Michael's Cathedral	Shuter St., bet'n Bond and Church Sts.
Unitarian	1	First Unitarian	206 Jarvis Street.
New Jerusalem	1	New Jerusalem	Elm Street.
Society of Friends	1	Society of Friends	28 Pembroke Street.
Salvation Army	5	Salvation Barracks	55 Little Richmond Street.

Places of Interest & Public Buildings.



- Parliament House, Front street west.
 Lieut.-Governor's House, corner of King and Simcoe streets.
 Custom House, corner of Yonge and Front streets.
 Exhibition Grounds and Crystal Palace.
 Provincial Lunatic Asylum, Queen street west.
 Osgoode Hall, Queen street west.
 College Avenue, Queen and Yonge streets.
 Queen's Park, head of College Avenue.
 Monuments to the Heroes of Ridgeway, and to George Brown, Queen's Park.
 University Buildings, Queen's Park.
 Horticultural Gardens, corner Gerrard and Sherburne streets.
 Zoological Gardens, corner York and Front streets.
 Normal School, Museum, etc., Gould street.
 St. James' Cathedral (Episcopal), King street east.
 St. Michael's Cathedral (R. C.) Shuter street.
 Metropolitan Church (Methodist), Queen street east.
 St. Andrew's Church, King street west.
 Baptist Church, corner Jarvis and Gerrard streets.
 St. James' Cemetery, Parliament street.
 Post Office, Adelaide street east.
 St. Lawrence Hall and Market, King street east.
 Public Library, corner Church and Adelaide streets.
 Central Prison, Strachan avenue.
 City Hall, Front street east.
 Exhibition Rooms Society of Artists, King street west.
 Knox College, Spadina avenue.
 Trinity College, Queen street west.
 McMaster Hall, Bloor street west.
 Grand Opera House, Adelaide street west.

QUEEN'S HOTEL.



THE QUEEN'S HOTEL,

TORONTO, ONT.

McGAW & WINNETT, Proprietors.

The "Queen's" is one of the largest and most comfortable hotels in the Dominion of Canada, and being adjacent to the lake commands a splendid view of Toronto Bay and Lake Ontario. It is well known as one of the coolest houses in Canada, and is elegantly furnished throughout; rooms "en suite," with bath-rooms, etc., attached, on every floor.

In 1871, apartments were occupied by His Royal Highness, the Grand Duke Alexis of Russia.

In May, 1880, their Royal Highness, the late Prince Leopold, K.G., &c., and Princess Louise occupied a suite of apartments at the Queen's.

His Excellency, the Earl of Dufferin, K.P., &c., &c., ex-Governor-General of Canada, and the Countess of Dufferin, on the occasion of each visit to Toronto, engaged apartments at the "Queen's."

His Excellency, Lord Lorne and H. R. H. Princess Louise, on each visit to Toronto, occupied the very handsomely furnished apartments, known as the "Royal suite" at this popular hotel.

The beautiful grounds about it being both spacious and airy, with Croquet and Chevalier Lawns, render it one of the most pleasant and desirable hotels for business men, pleasure seekers and the travelling public.

The Queen's is furnished with all the latest modern improvements. Handsome Passenger Elevator, Electric Bells, &c.

From the "Cut" it will be seen that the "Queen's" is but three stories high, covering a large area of ground, used exclusively for Hotel purposes, and having Lawns on either sides with means of exit from the house in addition to those in front and rear, renders it almost impossible for an accident to take place from fire; consequently the "Queen's" is looked upon as the safest hotel in the Dominion of Canada.

Telegraph communication to all parts.

No runners employed.

"DOMINION"

P
I
A
N
O
S



O
R
G
A
N
S

Manning Arcade, 28 King Street West.

PIANO AND ORGAN METROPOLIS OF CANADA.

The Most Palatial Storeroom in the

THE DOMINION THE
LEADING PIANO AND THE LEADING ORGAN

Largest Stock and Greatest Variety of Styles always on
hand to select from. Not five minutes' walk
from the Queen's Hotel.

JOSEPH RUSE. also Sole Agent for the cele-
brated Steck Piano, N. Y.

THE (QUEEN'S)

ROYAL NIAGARA HOTEL.

A branch of the Queen's Hotel, Toronto, and carried on during the summer months by an able manager, is located in the town of Niagara, in a beautiful grove at the mouth of Niagara River, on the shore of Lake Ontario, fourteen miles from Niagara Falls, and twelve from St. Catharines, is accessible by railway or steamboat; only thirty minutes ride by the Erie and Niagara Railway or the New York Central R'y. via Lewiston, N.Y., from Niagara Falls, and two hours by steamer from Toronto.

One of the Royal Mail Line of Steamers leaves Niagara daily for Montreal, passing through Lake Ontario, the Thousand Islands, the Rapids and the River St. Lawrence, calling at all points both on Canadian and American shores.

The town of Niagara, then called Newark, was at one time the seat of Government of Upper Canada; its surroundings are full of varied and historical interests.

The facilities for Black Bass and other Fishing, Bathing and Boating are unsurpassed.

The drives are refreshing and the scenery beautiful in and about the town and along the banks of the lake and river.

JAMES H. ROGERS,

Successor to Joseph Rogers.

LEADING STYLES

—IN—

ENGLISH & AMERICAN

Silk and Felt Hats,

UMBRELLAS. VALISES.

L. crasse Sticks and Indian Curiosities in great variety.

Seal Jackets and Dolmans made to Order and
on view all the year round.

Fur Trimmings Cut to Order on the
shortest notice.

FUR LINED GARMENTS A SPECIALTY

Highest Prices paid in Cash for Raw Furs.

JAMES H. ROGERS,

105 King Street East,

TORONTO.

296 Main Street,

WINNIPEG.

FINEST GOODS AT BOTTOM PRICES.

TECUMSEH HOUSE,
LONDON, ONT.

Is situate directly opposite the Grand Trunk, late Great Western Depot—the most conveniently located house in London. This house is strictly first-class in every respect, and situated on one of the principal business streets; Street Railway Cars pass the doors; Elevators for passengers and baggage day and night; the most courteous and attentive officers will always be found on duty in the office; porters in attendance on arrival of all trains.

McGAW, WINNETT & MOORE,

Proprietors.

The Toronto City Book House,

5 KING STREET WEST 5

Next Door to the Dominion Bank.

WILLIAMSON & CO'Y

(Late Willing & Williamson),

Invite visitors to call and inspect their Large and Well-Assorted Stock of

BOOKS, STATIONERY and FANCY ARTICLES

Printing, Engraving, Book Binding,
Die Stamping and Embossing.

EXECUTED WITH NEATNESS & DESPATCH.

OWN PUBLICATIONS.

SCADDING'S TORONTO OF OLD—594 pages, 8vo. cloth,
of special interest this year.

CHAVASSE'S MANUAL FOR WIVES & MOTHERS.
—600 pages. The best home book we know.

COOK'S INLAID INTEREST TABLES, 4 to 10 per cent.
The business man's helper.

THE ONTARIO ATLAS (Separate County Maps).
THE MUSKOKA ATLAS AND GUIDE BOOK.

WILLIAMSON & CO.,

5 King Street West, Toronto.

City of Toronto.

BRIEF SKETCH OF THE "QUEEN CITY OF THE WEST"—INFORMATION FOR THE TRAVELLER AND PLEASURE SEEKER.

The traveller or pleasure seeker who, for the first time, gazes upon Toronto from the deck of one of the many handsome steamers ploughing the waters of Lake Ontario, is apt to be unfavourably impressed with the view presented. What at first sight seems but a bare, low-lying stretch of land, rising gently on the right to a cliffy eminence, gradually breaks into a panorama of great beauty as the boat approaches the northern shore of the lake. Finally, when the steamer rounds the western point of the Island—Toronto's natural breakwater, and the home of the ex-champion oarsman of the world—and enters the bay bearing the city's name is convincing evidence given of a wealthy and prosperous commercial centre.

The site of the town of York was selected by Lieut.-Gov. Simcoe in May, 1793. Its situation was on low and marshy ground, and for many years the embryo city (now Toronto) was familiarly known as "Muddy York." The history of the town is comparatively uninteresting until the years 1812-15, when the place was sacked and

J. D. KING & CO.,

79 King Street East, Toronto.



Visitors to the City will always find it easy to suit themselves from our Stock of

FINE BOOTS AND SHOES

Nearly all of our well known manufacture. Our goods are in Half Sizes and in more widths than any other house in the Dominion ;
also Dealers in

Ladies' Slippers & Children's Goods

—OF—

FRENCH AND AMERICAN MAKE.

Our Prices are Moderate. Please call and see us.

79 King Street East, Toronto.

partially destroyed by the American forces. Time, however, obliterates old scars, and the Toronto of to-day shows no signs of that early conflict. What the century has done for our neighbors in no inappreciable degree it has done for us; and both peoples have reason to be thankful for the blessings of the new civilization it has been theirs so auspiciously to found and advance.

On the 6th of March, 1834, when Sir John Colborne was at the head of affairs, the town was incorporated and the name of York dropped, and Toron'o (the original name of the place) substituted. The meaning and derivation of the word "Toronto" is still a matter of doubt, some authors contending that it is the Huron term for "the place of meeting;" others assigning to it "trees rising out of the water." The first election was held on the 27th of March, and Wm. Lyon Mackenzie was elected first Mayor of the city. The troubles of 1836-37, or what was popularly known in those days as "Mackenzie's Rebellion," were followed by years of commercial prosperity, and Toronto of to-day ranks as the second city of the Dominion of Canada.

As before stated, the immediate points of the city lie somewhat low, yet there is a grand ascent, and the lines of Tom Moore,

TORONTO SHIRT FACTORY

WHEATON & CO.,

17 KING ST. WEST, COR. JORDAN.

WHITE DRESS SHIRTS,

Collars and Cuffs,

Superior to anything manufactured in the Dominion.

Ladies' and Children's Underwear,

A very fine assortment always in stock; orders
taken and satisfaction guaranteed.

A fine stock Gent's & Ladies' Hosiery
and Fancy Goods.

FRENCH KID GLOVES,

Best Makes. All Sizes. Cash Prices.

WHEATON & CO., 17 KING ST. WEST,
Cor. Jordan.


“Where the blue hills of old Toronto shed
Their evening shadows o'er Ontario's bed,”

may have had a more true appreciation in former days than some critics of the present seem to approve. The land a mile from the lake, is 108 feet above the water's level, and two miles farther on it is some 250 feet; four or five miles north the city seems to be at one's feet.

Six lines of railway now have their terminal stations in this city—the Great Western Division of the Grand Trunk Railway; the Toronto, Grey and Bruce Railway, and the Credit Valley Railway, now comprise the Ontario Division of the Canadian Pacific Railway, the main line of which as also the main line of the Grand Trunk Railway passes through. The Northern and North-Western, and the Midland Divisions of the Grand Trunk Railway, have their termini at this point also.

During the season of navigation steamers run to and from all principal points, and a large fleet of schooners make Toronto their objective point.

In the City of Toronto there are at present about 20,000 public and private buildings. The population is placed at 130,000. The yearly civic income and expenditure is over \$2,000,000 as an average. The assessed value of property



ROLPH, SMITH & CO.
DESIGNERS,
LITHOGRAPHERS,
ENGRAVERS,
PRINTERS

36, WELLINGTON ST. EAST.
WOOD
ENGRAVING TO RONT
A SPECIALTY

this year (1885) is about \$69,000,000. The beautiful village, Parkdale, on the west, known as the "Flowery Suburb," will no doubt shortly be added to the city. In 1812 the population was under 1,000.

Toronto is celebrated for its aquatic sports; the renowned Hanlan having given an impetus to this class of sport and made Toronto bay famous throughout the world. The bay on the city side is one long line of public and private boat-houses, of the former the most prominent are the Toronto Yacht Club, Toronto Rowing Club, Argonaut Rowing Club, Canoe Club, Bayside Rowing Club, Leslieville Rowing Club, and of the latter one almost unbroken line. During the boating season, in the afternoon and evening, the bay is the scene of a grand carnival, which in winter is varied by ice boating—a most exciting sport—and can be seen at its best on this sheet of water.

A visit to the Island will be appreciated by all. At the eastern extremity will be found the Wiman Baths, among the finest on the continent; in the centre is the Island Park and the Club House of the Royal Canadian Yacht Club, while at the western end is Hanlan's home, the champion sculler of the world, and the Western Swimming Baths. Boats leave the Church and York Street wharves every fifteen minutes during

COX & CO.,
Stock Brokers

Members Toronto Stock Exchange.

Have the only Independent Direct Wire giving
continuous New York Stock Quotations, and
which are received quicker than by
any other line.

**Buy and Sell on Commission for Cash or on
Margin.**

All securities dealt in on the Toronto, Montreal,
and New York Stock Exchange; also execute
orders on the CHICAGO BOARD OF TRADE
in Grain and Provisions.

**Daily Cable Quotations of Hudson Bay
and other Stocks.**

26 TORONTO STREET 26

TORONTO.

the day. The Island is the summer residence of many of Toronto's citizens, whose pretty homes by the waters of Ontario are deservedly admired by visitors.

The traveller arriving at any of the railway stations or by the steamboats will find the Queen's Hotel within easy distance.

Passing into the city, the visitor will see that the streets of Toronto are spacious, well laid out and regularly built. The two main arteries of the city are King and Yonge Streets, which crossing each other at right angles, divide the city into four large sections. Yonge Street runs north and south, King Street east and west.

YONGE STREET.

Starting from the foot of Yonge Street, named after Sir George Yonge, northwards from the Bay, the most striking objects to be met are the Custom House, Bank of Montreal, Royal Insurance Company, then Wellington Street and on either side the City Hall, Bank of Toronto, numerous wholesale houses, Edinburgh Life Insurance Company's building, Merchants Bank, Bank of British North America. The lower portion of Yonge Street, from King to the Bay, is composed mostly of wholesale houses while above King is almost an unbroken line of retail shops of every description, and it is, perhaps,

ONTARIO TRUNK FACTORY.

H. E. CLARKE & CO.,

MANUFACTURERS OF

TRUNKS,

Travelling Bags,

VALISES, ETC.

Wholesale:—594 to 600 King Street West,

Retail:—105 King Street West,

TORONTO.

the most busy street in the city, the buildings, many of them, being of fine structure. Yonge Street is the great thoroughfare of the north, runs almost north and south, and divides the city into two grand divisions, extending from the bay as far north as Holland Landing, a distance of thirty miles.

ONTARIO COLLEGE OF PHARMACY

at the corner of Scott and Wellington Streets, in the upstairs apartments of the Western Insurance Company, is the Ontario College of Pharmacy. The college contains the largest and best collection of materia medica in Canada.

COLLEGE OF PHYSICIANS AND SURGEONS.

The headquarters of the College are situated at the corner of Bay and Richmond Streets. The office of the Registrar of the College is at the rear of the buildings.

ONTARIO VETERINARY COLLEGE

is situated on Temperance, near Bay Street, and is the most important of its class in America. Students from all parts of Canada and the United States have graduated here, and almost every State of the neighboring Union and every County in Canada has its representative student.

AIKENHEAD & CROMBIE,

COR. KING & YONGE STREETS,

TORONTO.

IMPORTERS OF

Table & Pocket Cutlery,

Tents, Awnings, Flags, Life Buoys,

Cork Jackets made to order,

Galvanized Boat Fittings,

Cordage and Oakum,

Machinists' and Carvers' Tools,

Iron, Steel, Nails, Files,

IMPROVED LAWN MOWERS,

Gilbert's Leather Belting,

BOSTON BELTING CO.'S RUBBER HOSE,

Packing, Etc.

AND EVERY DESCRIPTION OF

H A R D W A R E,

Sole Agents for Norton's Patent Door Check
and Spring.

ESTABLISHED 1830.

Dr. A. Smith is Principal, and is assisted by a competent staff.

CANADIAN INSTITUTE

is situated on Richmond, between Yonge and Church Streets, and will be found a place of interest to persons interested in science. The building contains a reading room well supplied with magazines, scientific and literary journals, etc. A splendid library of six thousand volumes will be found upstairs. The Toronto Natural History Society also have rooms in the buildings for its meetings and collection of birds, insects, etc.

HOLY TRINITY CHURCH.

The site of this beautiful little edifice is in Trinity Square, between Alice and Louisa Sts., and was built by a lady whose name has never been known to the public. The endorsement was anonymous, being £5,000 Sterling, appropriated as follows—£3,000 to build the church and £2,000 as the basis of an allowance for the incumbent.

YONGE STREET ARCADE.

On the east side of Yonge Street, between Adelaide and Richmond Streets, can be seen the most handsome business block in the city. This is known as the Arcade, and extends from

CHINA HALL.

27

CHINA HALL,

(REGISTERED),

NO. 49 KING STREET EAST,

TORONTO.

GLOVER **H**ARRISON,

IMPORTER OF

China Breakfast & Tea Sets,

DINNER AND DESSERT SETS,

TOILET SETS, GLASSWARE,

Parian Statuary, Bohemian Vases, Plated
Goods, Table Cutlery.

FANCY GOODS,

TEA TRAYS, &C.

Yonge to Victoria Streets. It is well lighted, and contains stores of every description.

KING STREET

King Street, the principal one in Toronto, is 66 feet in width, is well built up with substantial brick and stone buildings, many of them being equal to any on the American continent. It is about forty years since it was completely composed of wooden structures, and was hardly passable to pedestrians, but now each side is lined with stately stores, where most of the business is done. The improvements on this street are advancing rapidly, and it bids fair to be, eventually, one of the finest streets in Canada. King street is built up for about three miles, but extends still further; it forms the main artery for business from the east.

At the corner of King and Yonge Streets, we notice first the fine building of the Dominion Bank, and then a succession of fine stores, some of very recent construction, and the different styles of architecture. Some distance west stands

THE "MAIL" BUILDING.

This handsome, attractive structure is situated on the corner of King and Bay Streets. In architectural style, size, and the excellence of internal equipment it stands without an equal

P. M. CLARK & SON,

TAILORS,

Gentlemen's Haberdashers,

95 King Street West,

TORONTO.

among the printing offices of the largest dailies in America. It has a frontage on King Street of 50 feet, with a depth of 146 on Bay Street. From the basement floor to the line of roof is 102 feet, and on King Street is a tower raising to the altitude of 130 feet from the ground, surmounted by a flag-staff of 35 feet. One of the sights of the city is *The Mail* pressroom, when the large weekly edition is being run off on two Scott Web Presses, on Wednesday night. The building with the ground, cost over \$100,000.

ST. ANDREW'S CHURCH.

Upon the south side a short distance further on, stands St. Andrew's Church, which is, externally, one of the finest specimens of Norman architecture upon the continent. Its entire effect is very striking.

GOVERNMENT HOUSE

The residence of the Lieut-Governor, the Hon. J. B. Robinson, is opposite the church and is designed in the modern French style of architecture. Red brick is the material used in the walls, relieved with Ohio cut stone dressings.

The main building is three stories in height above the basement; the upper story is partially in the roof, which is constructed on the Mansard principle, the sloping sides are very steep,

GO TO THE GREAT

RUBBER WAREHOUSE

10 and 12 King Street East,

For genuine goods such as are sold only by an Exclusive
Rubber House.**INDIA RUBBER GOODS**

OF EVERY DESCRIPTION.

A Large and Well Selected Stock just arrived.

Rubber Lacrosse Shoes, Rubber Bathing Caps, Rubber
Lacrosse Balls, Rubber Sponge Bags, Rubber Life Pre-
servers, Rubber Swimming Collars, Rubber Air
and Water Beds, Rubber Air Pillows, Rubber
Nursery Sheeting, Rubber Sportsmen's Hip
and Knee Boots, Rubber Gossamer Cir-
culars with Pockets and Sleeves (at
all prices), Rubber Gloves for
Ladies & Gentlemen, Rubber
Belting, Packing & Hose.

Rubber Lawn Hose, of our own manufacture, fully war-
ranted, Hose Reels, Sprinklers,
Couplers and Pipes.

The Gutta Percha & Rubber

M'FG CO.

T. McILROY, Jr.

THE GREAT RUBBER WAREHOUSE,

10 & 12 King Street East, Toronto.

Factories—Toronto, New York and San Francisco.

covered with Melbourne slate and relieved by handsome segmental domes, lighting the third story apartments. The ridge is finished with moulded sides, and the deck is laid with the same material.

Towards Simcoe Street the frontage is about 80 feet, and in the centre of it rises a tower 70 feet high, finished with a handsome wrought-iron railing. The roof of the tower is of the same description as that of the main building, but starts from the balustrade finished at corners with paneled pedestals and carved vases.

The frontage of the main building towards King Street is about 88 feet, and the kitchen wing extends 100 more, making a total of 108 feet. Covering the main entrance, which is under the tower facing Simcoe Street, is a large handsome carriage porch, supported on clusters of Corinthian columns resting on cut stone pedestals. From the capitals of columns spring arches supporting entablatured with enriched balustrade, finishing at angles with paneled pedestals and carved vases. The verandah on the south front is treated in a similiar manner. The main doorway is deeply recessed with massive cut-stone arch and jambs, and broad cut-stone steps, and leads into the vestibule, twelve feet square, which is separated by an elaborate screen, filled in with stained and em-

C. SHEPPARD'S
DRUG STORE,

67 King Street West,

TORONTO.

P E R F U M E S

Lubin's and Atkinson's. A large
variety of each.

H A I R B R U S H E S

A specialty. Large assortment. Best makers. Good
value.

T O I L E T A R T I C L E S

All kinds belonging to our trade.

P A T E N T M E D I C I N E S .

AT 67 KING STREET WEST

Nearly opposite "Mail" Building.

bossed glass, from an inner vestibule or loggia of the same dimensions. This again is separated from the main hall by an enriched arch springing from fluted Corinthian columns, with richly carved caps. The inside of the building is finished in the most elaborate style, with every modern convenience. The grounds have been much altered and improved, and approaches of Nicholson pavement put to the entrances. Total cost of the building, \$102,000.

PARLIAMENT BUILDINGS.

South of the Government House are the Parliament Buildings, which will very soon give place to larger and handsomer structures, to be erected in Queen's Park. They were erected when the Province was comparatively unsettled, and have been patched and extended from time to time as the business of the Province required.

UPPER CANADA COLLEGE

Stands on a site of nine acres, opposite the Government House, fronting on King street, and consists of a row of neat brick buildings. This institution was founded A.D. 1829.

The centre building is the College proper, containing large and well ventilated class-rooms, a library, a laboratory, and a public hall, the residences of the principal and of the various

HARRY A. COLLINS,

THE

Leading House Furnishing Store of Toronto.

WE MAKE

JOSEPH RODGERS & SON'S

—FINE—

Pocket and Table Cutlery

A SPECIALTY

AND CARRY A FULL LINE.

~~~~~  
**HOUSE-KEEPER'S EMPORIUM,**

**90 Yonge St., West Side,**

**TORONTO.**

masters being on either side. The College boarding house, which has lately had a very large addition added to it, is spacious and fitted with every appliance, does not appear in the view, as it recedes from the line of the other buildings. The same may be said of the gymnasium, etc. The lawn is handsomely laid out, and its cricket ground and play-yards are extensive. His Excellency the Gov. General is a visitor, and annually offers the highest prize to the head boy.

Going west, in due course, the visitor arrives at the

#### EXHIBITION BUILDINGS,

Which were opened to the public by the Earl of Dufferin, then Governor General of Canada, in September, 1878. They are built with stone foundations, with sides and roof of glass, and present a light appearance to the eye, affording admirable accommodation for the advantageous exhibition of goods. The building is in the form of a cross with three entrances, one in the south, east and west respectively. The main hall is very spacious and light, and the galleries running round the building not only give additional exhibition space, but afford an admirable promenade. The prevailing color of the walls is a soft drab, with light green trimmings for pillars and other supports, and the combination is at

---

CHARLES POTTER,  
OPTICIAN,

31 King St. East, Toronto.

---

**Spectacles and Eye-Glasses**

A SPECIALTY.

*OPERA & MARINE GLASSES*

TELESCOPES, ETC.

And all kinds of Optical, Mathematical and  
Philosophical Instruments made  
and repaired.

---

ESTABLISHED 31 YEARS.

once harmonious and refreshing to the eye, and effective for the exhibition of goods. The new Crystal Palace and grounds are situated on the Garrison reserve, at the west end of the city, overlooking lake Ontario, and can be reached cheaply and speedily by steamer along the lake, and railway, and the stranger in the city ought not to leave without seeing them.

#### LUNATIC ASYLUM.


This vast building stands further to the north, on Queen street, two miles and a half from the Central Market. It is located on a level plain, on a part of the Old Garrison Common, part of the Ordnance Land. Its front measures (veranda included) 644 feet. The building is four stories high. Two very large wings have been added to this institution, and it now ranks third in point of size and population on the continent of America. The grounds adjoining the Asylum are highly cultivated, the ornamental part is very neatly kept, and adds very much to the enjoyment and healthfulness of the patients. At present there are in the Asylum proper, and the two adjoining hospitals, over 800 patients. The institution is under the direction of Daniel Clarke, M. D., the Medical Superintendent, assisted by a competent staff.



## CANADIAN TOURIST ROUTES.

The great fresh water Lakes of this continent are, with Niagara Falls, the most unique and characteristic subjects of interest to travellers from other countries, or for summer excursions for residents in our midst.

### THERE ARE NO LAKES LIKE THEM IN THE WORLD

 Lines of Steamers running upon EVERY ONE of the GREAT LAKES are represented at this office.

**Lake Superior**—The Great North Shore Route, and the only Line passing through the sheltered waters of the Great North Manitoulin Channel. The finest excursion route to Lake Superior. Through travellers to Winnipeg, St. Paul, or any points in the great North-West will find this most pleasurable line of travel, combining the scenery of the lakes with the Western Railway from Duluth.

**Lake Huron**—Agreeable short excursions through the Georgian Bay and the 10,000 Islands of the Parry Sound Archipelago, and the inside route to Sault Ste. Marie.

**Lake Michigan**—Passing Cheboygan, Mackinac Island and Strait. All places in the Western and South-Western States and the Railways from Chicago and Milwaukee are reached by this route at the most reasonable rates.

**Lakes of Muskoka**—Are PAR EXCELLENCE the most beautiful lake district in Canada. Fishing in abundance. A region of little Lakes, Rivers and Trout Streams.

**Lake Ontario**—Routes through the Thousand Islands and via Ogdensburg and the beauties of Lake Champlain and the White Mountains to Portland and Boston.

**Niagara River**—PALACE STEAMER "CHICORA" every day for Niagara Falls and every place on New York Central and Erie Railways. A pleasant trip to the Falls and back can be made in one day.

INFORMATION cheerfully given. Enquire for Excursion Pamphlets and Rates.

## BARLOW CUMBERLAND,

35 Yonge Street, Toronto,

Also Agent of "Inman," "State" and "Guion" Lines for Europe

AND THOS. COOK & SON.

### ORPHAN'S HOME.

The new Home for Orphans is situated on Dovercourt Road, and is built of red brick, relieved with black courses, the basement being faced with Credit Valley grey stone. The locality has been well chosen, being at once elevated, picturesque and airy. The building, which, by the way, cost \$40,000, is well ventilated and supplied with all modern conveniences, with ample accommodations for over 200 boys and girls. Preparations have also been made in case of fire.

### THE MERCER REFORMATORY.

The King street cars going west convey the visitor to within a convenient distance of the Mercer Reformatory for Women. It is a red brick structure in the Gothic style of architecture. The building contains about 190 cells and rooms. Though a prison to all intents and purposes, the object of the institution is rather reformation than punishment. The cost of the building was about \$90,000.

### HOME FOR INCURABLES.

On Dunn Avenue, Parkdale, is a large red brick building of light and cheerful appearance, occupied by one of Toronto's worthiest charities

**OCEAN**  
**PASSENGER AND FREIGHT**

 **AGENCY.** 

**CUNARD STEAMSHIP LINE,**  
New York to Liverpool.

**DOMINION STEAMSHIP LINE,**  
Montreal to Liverpool.

**STATE STEAMSHIP LINE,**  
New York to Glasgow.

**NORTH GERMAN LLOYD'S COMPANY,**  
New York to Bremen.

**MONARCH STEAMSHIP LINE,**  
New York to London.

**BORDEAUX LINE,**  
New York to France.

**Netherlands Ocean S. S. Navigation Company**  
New York to Rotterdam.

**FLORIO RUBATTIN'S ITALIAN LINE,**  
New York to Italy.

Tickets to New York, Boston, and all points in the U. S.,  
and every information given. To be obtained from

**SAM. OSBORNE & CO.**  
AGENTS,

**40 Yonge Street, Toronto.**

—the Home for Incurables. A walk through the rooms will well repay the visitor. As may be expected from the name of the institution, those who enter the Home are supposed to be diseased beyond the hope of cure. There are at present between forty and fifty inmates, under the care of the matron and a staff of attendants.

#### HIGH PARK.

Further west is High Park, a beautiful spot presented to the city by Mr. Howard, who resides on the property.

#### TRINITY COLLEGE.

Returning eastward along Queen street, the visitor arrives at Trinity College, standing back some distance. It is a very handsome building, in spacious grounds, facing the entrance to the Bay. The College was erected in 1851, at a cost of \$40,000, after plans prepared by Mr. Kivas Tully. The building is of white brick with stone dressings, and is designed in the third period of pointed English architecture. It has a frontage of 250 feet, facing south, with wings projecting east and west, 53 feet each. It is designed to accommodate eighty students, with class-rooms, chapel, library, and museum; also private residences for the Provost and two senior professors. It is a great ornament to

*Niagara Navigation Company*

Palace Steamer

## 'CHICORA.'



The Steamer "CHICORA" will leave Yonge St. Wharf daily at 7 a.m. and 2 p.m., for Niagara and Lewiston, making close connections with the Michigan Central and New York Central Railways. The shortest route to Niagara Falls, Buffalo, New York, and all points East, West, and South-West.

For Tickets and all information apply to

**SAM. OSBORNE & CO.,**

40 Yonge Street.

**BARLOW CUMBERLAND,**

35 Yonge Street.

the unwearied zeal of the Right Rev. Dr. Strachan, Lord Bishop of Toronto. The College is the training school of the Clergy of the Diocese, and has a high reputation. A very fine new Convocation Hall has recently been added.

#### OSGOODE HALL.

A short distance further brings the traveler to Osgoode Hall, which is named after the Hon. Wm. Osgoode, the first Chief Justice of Upper Canada, is the seat of the Law Society of Upper Canada, and contains court-rooms and offices for the Superior Courts of the Province. The cost of the building has amounted to about \$300,000. The grounds comprise about six acres of land.

A Law School has been established under the direction and tuition of three readers, designated respectively, the Reader on Common Law, the Reader on Equity, and the Reader on Real Property. Four scholarships have been established, one for students under two years' standing of £40 per annum; one for students under one year's standing of £30 per annum; and for students under three years standing of £50 per annum; and one for students under four years standing of £60 per annum.

The building is of the classic style and is of great beauty, the centre hall being very fine.

# THE WHITE STAR LINE

## ROYAL MAIL STEAMERS.

SAILING WEEKLY BETWEEN

### *NEW YORK AND LIVERPOOL*

#### CALLING AT QUEENSTOWN.

Are all of them without exception among the largest of Ocean Steamers and of their original construction and dimensions.

They are of unusual strength, each being built in seven water-tight and fire-proof compartments, and the two principal decks in each being of iron sheathed with wood.

Their fine model, full power, and excellent sea-going qualities, have made their passages famous for speed, comfort and regularity.

The saloon accommodation is all in the centre of the ship, where the noise and motion are least.

The appointment for passengers' comfort generally are appropriate, modern and ample.

The lighting, ventilating and sanitary arrangements are all of the most effective description and are unsurpassed in any vessel afloat.

As passengers are berthed on the SALOON DECK ONLY, the number is necessarily limited, thus affording ample room in the dining saloon, and for promenading on deck.

**T. W. JONES, General Agent,**  
23 York Street, Toronto.

The Court of Queen's Bench, Common Pleas, and Appeal, are all fine chambers.

### KNOX CHURCH

Is a short distance further on. The tower and spire of this church are very much admired for their graceful proportions. It will accommodate 2,300 persons.

### SHAFTESBURY HALL.

This Hall, nearly opposite Knox Church, is the headquarters of the Y. M. C. A. of the city.

### COLLEGE AVENUE.

Turning back for a short distance, the above Avenue is reached. This drive and promenade leading from Queen street to the University grounds, is nearly one mile in length, 120 feet in width, and contains about ten acres of land. It is handsomely planted with trees on either side, through the centre of which runs a carriage drive, flanked by a grass border of considerable width. The Avenue is one of the finest in the Dominion, or perhaps on the continent, and was laid out about the year 1829 or 1830, by the University of King's College, now the University of Toronto, and planted by the late John Wedd. In 1859, this, with the Yonge Street Avenue, which is much narrower, and crosses it at right



THE RIVER ST. LAWRENCE PLEASURE ROUTE.

SEASON 1885.

The Richelieu & Ontario Navigation Compy's  
**ROYAL MAIL LINE.**



*From Niagara Falls to Toronto, Kingston, Clay-  
ton, Round Island, Thousand Island Park,  
Alexandria Bay, Brockville, Prescott,  
Montreal and Quebec.*

Making connections with the Steamers of the far-famed River Saguenay, the Intercolonial Railway, and Maritime Provinces, etc. Passing through all the scenery of the Thousand Islands, and the Rapids of the St. Lawrence by daylight. This route affords advantages to tourists in procuring Optional Tickets, enabling them to travel by **Steamer** or **Rail** for the whole or a portion of the route. All the rapids of the St. Lawrence are run under the guidance of old and experienced pilots.

Tickets and all information may be obtained from the principal Railways and Ticket Offices, throughout the United States and Canada; and from the Company's Agents at various places.

ALEX. MILLOY,

*Traffic Manager.*

J. B. LABELLE,

*General Manager.*

— GENERAL OFFICES: —

**228 St. Paul Street, - Montreal.**

angles at its northerly termination, together with 50 acres of the University Park were granted to the Corporation of the City of Toronto, on a lease for a period of 999 years. for the purpose of a public park, to be kept in order by the city. Building lots for villas of a certain description have also been laid out for leasing around this Park, and many elegant residences have been erected.

#### THE VOLUNTEERS' MONUMENT.

Very near the University stands the Volunteers' Monument, erected by the public in memory of the volunteers who fell in the act of repelling the invasion of a body of Fenian marauders from the United States, in the year 1866. It is a composite structure of red stone, and contains also four statues, in niches, representing two soldiers and two female figures, typifying the mourners. A statue of Britannia surmounts the whole. Some of the slain were members of the University, and to their memory a window is also erected in the College Hall.

#### THE UNIVERSITY BUILDINGS.

Driving for a short distance in the Park, the traveller arrives at the University. This magnificent pile of buildings was erected during the years 1854-57, to provide accommodation not only for the University of Toronto (which

New York, Lake



and Western R. R.

THE POPULAR AND SHORT LINE TO

**NEW YORK,**

—FOR—

**The Tourist, Business Man, or Ocean Traveller**

A Special Feature is the DINING ROOMS, where the finest meals are served and ample time given passengers to enjoy them.

**PULLMAN'S PALACE**

**Drawing Room & Sleeping Coaches**

Are run on all EXPRESS TRAINS.

Express Trains leave Suspension Bridge and Buffa'o daily on arrival of trains on Great Western Division of the Grand Trunk Railway, and during the summer months direct connections are made by the Steamers "Chicora" and "Empress of India," to and from Toronto. For time of departure from Toronto, see Grand Trunk Railway Time Tables.

**JNO. N. ABBOTT,**

Gen. Pass. Agent,

NEW YORK.

**J. S. BARTLETT,**

Gen. Nor. Pass. Agt.,

BUFFALO.

**PETER F. DALY,** Travelling Passenger Agent.

simply confers degrees) but also for University College, with its various lecture rooms, residences, and students' quarters. The massive structure was designed by Messrs. Cumberland and Storm, and built under their directions. The chief facades of the building are to the south and east, the former of great and massive elevation, for distant effect from the lake and city.

The general outline of the building approaches the form of a square, having an internal quadrangle of about 200 square feet, the north side of which is left open to the Park. The main frontage of the south is about 300 feet long with a massive Norman tower in its centre, 120 feet in height, and comprising two stories, that on the ground being devoted to lecture rooms, and the upper story to the library and museum; these may be called the public portion of the building. The east side of the building is 260 feet in length and entered by a subsidiary tower. The west end of the quadrangle is about 200 feet in length, and is used as residences for the students. The whole cost was nearly \$500,000.

#### THE OBSERVATORY.

To the south of the University, and facing it, is the Observatory, instituted for the observance of meteorological events. The collection of

# CANADIAN PACIFIC R'Y

(Eastern and Ontario Divisions.)

## THE NEW TRUNK LINE

BETWEEN

## EAST AND WEST

—AND—

### THE SHORTEST, SAFEST AND CHEAPEST ROUTE

To Detroit, Chicago and the West; to Boston, Ottawa,  
Montreal and the East; to Owen Sound, Lakes Superior  
and Huron, and Manitoba and the North-West.

Tourist Route to the Ottawa Valley; or, via  
Owen Sound to all Georgian Bay and  
Upper Lake Ports,

CANADIAN PACIFIC STEAMSHIPS

## ALBERTA, ATHABASCA, ALGOMA

EVERY

Tuesday, Thursday, Saturday,

To PORT ARTHUR DIRECT.

*Clyde Built.*

*Lighted by Electricity.*

\*Parlor and Sleeping Cars on all Through Trains.

For Tickets and Information, apply to

W. R. Callaway, 24 York St. & 110 King St. W.

W. C. VAN HORNE, W. WHYTE, D. McNICOLL,  
Vice-President. Gen. Supt. Gen. Pas. Agt.

J. R. PRUYN, Asst. G. P. Agt.

HEAD OFFICES, - MONTREAL.

scientific instruments, including a recent addition consisting of a telescope specially obtained for observing the transit of Venus, is large and interesting. Weather reports, notices of the approach of storms, and weather probabilities generally for the Dominion are issued from this office. "Old Probabilities" sometimes makes a mistake, but not often, and for twenty-four hours ahead is generally reliable.

#### McMASTER HALL.

The Toronto Baptist College on Bloor Street is a grand effort in architecture. It is the seminary for Baptists throughout Canada. All local colleges of this denomination have been closed to theological students, and students transferred to this city. The college is built of brown stone faced with brick. It is five stories in height. There are several lecture rooms, chapel, parlor, library, reading room, two dining rooms, gymnasium, and accommodations for some sixty students. Expense has not been spared to make it one of the most complete affairs of the kind in America. The building was presented to the Baptist denomination free of debt by the Hon. William McMaster, Senator of Canada. Street cars run within a short distance of the College.

Passing through the upper Avenue the travel-

---

Leading and Fashionable Millinery

41 KING STREET WEST.

---

MISS M. MORRISON,

*Millinery, Mantles,*

**DRESSMAKING, FEATHERS, FANCY GOODS**

—AND—

**FLOWERS.**

---

41 *KING STREET WEST* 41

TORONTO.

ler reaches Yonge Street once more, and a drive eastward will bring him to

#### CONGREGATIONAL CHURCH,

Corner of Wilton Avenue and Bond Street, a new church, belonging to the above denomination, and a striking piece of architecture. It is also of Gothic style.

#### JARVIS STREET BAPTIST CHURCH,

At the corner of Jarvis and Gerrard Streets, is a splendid structure, built of Queenstown stone, pointed in Ohio stone, and is of the Gothic School "adapted," and has a spire and tower 165 feet high, is amphitheatrical in form, and contains a fine organ.

#### THE NORMAL AND MODEL SCHOOLS AND EDUCATIONAL OFFICES.

Close by, upon one of the most attractive spots in Toronto, are the buildings and grounds of this department, which include the Education Office, and the Depositories, and Educational Museum, the Normal School with Girls' and Boys' Model School. The buildings are situated upon the centre of an open square, of about seven acres and a half of ground.

The Educational Museum contains specimens



# JOHN KAY,

Invites the public to visit his

## *NEW CARPET WAREHOUSE*

Containing the Largest Stock of

# CARPETS

And greatest variety of NEW PATTERNS to  
be found in the city.

As he is now free to devote his entire attention to his

## Carpet & House Furnishing Trade,

He is determined that no effort on his part, backed by ample capital and long experience, shall be spared to maintain the lead which he has for some years held in the Carpet Trade in Canada.

# JOHN KAY,

THE CARPET WAREHOUSE,

No. 34 King Street West.

of Canadian and natural history, and the best varieties of maps, charts, diagrams, philosophical apparatus, and school furniture. It also contains an extensive and beautiful collection of copies of celebrated Italian, Dutch and Flemish oil paintings and engravings, and casts in plaster of Paris of some of the most noted groups of statuary (ancient and modern) together with a collection of English, Canadian, and classical busts, etc. Free admission may be obtained daily from nine to five o'clock.

#### HORTICULTURAL GARDENS.

A short distance further east are situated the Horticultural Gardens. The beautiful grounds occupied by the Gardens extend over a space of ten acres, all of which are highly cultivated, and are the property of the Toronto Horticultural Society. They were first opened to the public on the occasion of the visit of His Royal Highness, the Prince of Wales, in 1860. A tree planted by him has now reached considerable size.

In 1878 the old pavilion was removed, and on the Queen's Birthday, 1879, the new structure erected in its stead was opened to the public. The present pavilion is built in the form of a parallelogram on stone foundations, and is constructed of wood and glass, with iron roof trusses.

**BRUCE,**  
THE WELL KNOWN  
**ART PHOTOGRAPHER,**  
**118 KING ST. WEST,**  
**TORONTO.**

**I**S still to be found at his old stand, where he has conducted business for more than ten years; and been favoured with the patronage of the cultured and art loving public who consider his work far superior to that of any other firm in the city, in everything that tends to gratify artistic taste. His professional ability is only equalled by the care and attention bestowed on his patrons by himself and assistants, while he is justly celebrated for his tact in managing, and skill in reproducing the natural beauty of pose and expression of children.

Painting and Finishing in all its branches, either from nature, or from old portraits.

It is 75 feet by 120 feet, and has a fine gallery connected with an outer promenade and verandah by means of glass doors. The height of the ceiling at the walls is 43 feet, and in the centre 55 feet. The stage platform is 21 feet by 36 feet. The hall has been tested, and is pronounced by the *cognoscenti* the most perfect in acoustic properties of any building in the city. As a summer concert hall it is a much needed addition to public acquirements, has proved to be an entire success. A handsome iron fountain, 25 feet high, has also been added to the attractions of this place of public resort. The cost of the pavilion was \$20,000, and of the fountain, \$2,000.

The Gardens are now open during the summer months to all who may desire to visit them, from six in the morning until eight o'clock at night—after which hour the Directors have the right, under their agreement with the city, to charge an admission fee to those attending weekly promenade concerts or other performances given for the benefit of the Society.

#### TORONTO MEDICAL SCHOOL

Is situated on Spruce Street, a short distance from the General Hospital, and is affiliated with the University of Trinity College, the University of Toronto, and the University of Manitoba.



**J. W. ELLIOT,**  
**Dentist,**

Nos. 43 and 45 King Street West,

Over E. Hooper & Co.'s Drug Store,

**TORONTO.**

The students of all the Toronto Medical Colleges have access to the General Hospital.

#### TORONTO SCHOOL OF MEDICINE

Is situated at the corner of Gerrard and Sackville Streets. The building is of red brick and is two storys high. The College is affiliated with the University of Toronto and Victoria University, Cobourg.

#### THE TORONTO GENERAL HOSPITAL

Is situated on Gerrard Street, between Sackville and Sumach Streets, and is an institution of which Toronto citizens have a right to be proud. It is composed of white brick. The anhillary buildings are the Burnside Lying In Hospital, the Andrew Mercer Eye and Ear Infirmary, and the Fever Hospital, all erected by the gifts of prominent citizens, and standing in the General Hospital grounds, which are laid out beautifully in lawns, and planted with ornamental trees in a very tasteful manner. The institution is in charge of a trust composed of prominent citizens.

#### CEMETERIES.

St. James' Cemetery is at the head of Parliament Street, about eighty acres in extent. The grounds are beautifully laid out and planted.

**R. J. HOVENDEN,**  
 88 King Street West,  
 TORONTO,  
**FRESCO PAINTER**  
 —AND—  
**INTERIOR DECORATOR.**

The following are some of the Interiors I have Frescoed within the last few years, viz:—

|                                               |          |
|-----------------------------------------------|----------|
| Queen's Hotel Dining and Billiard Rooms ..... | Toronto  |
| Geo. Coleman's Ladies' Dining Room .....      | Toronto  |
| Canada Life Board Rooms .....                 | Hamilton |
| Mail Newspaper Counting Room .....            | Toronto  |
| London and Lancashire Insurance Office .....  | Toronto  |
| St. Andrew's Church .....                     | Grimsby  |
| Knights Templar Asylum Hall .....             | Toronto  |
| Picton Masonic Hall .....                     | Picton   |
| St. Mary's Cathedral .....                    | Hamilton |
| Residence of H. S. Northup, Esq .....         | Toronto  |
| Residence of A. G. Ramsay, Esq .....          | Hamilton |
| Residence of A. T. Wood, Esq .....            | Hamilton |
| Residence of H. H. Cook, Esq .....            | Toronto  |
| Residence of J. Herbert Mason, Esq .....      | Toronto  |
| Drawing Room, James Cooper, Esq .....         | Toronto  |
| Drawing Room, Sanderson Pearey, Esq .....     | Toronto  |

Together with many others too numerous to mention.

**COMPETITION**

That most effective barrier to the performance of good artistic work, most respectfully declined.

**Dealer in Painters and Fresco Painters Colors,  
 Brushes and General Supplies.**

The mortuary chapel is a fine specimen of Elizabethan architecture.

The Necropolis is on the north side of Winchester Street. The grounds are tastefully laid out.

Mount Pleasant Cemetery is situated on Yonge Street, about a mile north of the city, covering one hundred acres, in which are beautiful drives, artificial lakes and streams.

St. Michael's Cemetery, the burying ground of the Roman Catholic denomination, is situated on Yonge Street, within the city limits. It is very picturesque, and laid out with great taste.

#### ST. MICHAEL'S CATHEDRAL.

Returning south the visitor sees the above church, which stands on the corner of Church, Shuter and Bond Streets, with an entrance on Bond Street, is in the early decorated style of English Gothic architecture, built of white brick and cut stone dressings, being 200 feet in length by 90 feet in width, and with the transepts making a total width of 115 feet, exterior dimensions. The windows are large and filled with tracery of great variety—the eastern window of seven lights being 36 feet high and 18 feet in width. The transepts have large rose windows, with canopied niches in the gables. The building is wholly under one roof, forming in the interior



THE  
**Accident Insurance Co.**  
—OF—  
**NORTH AMERICA.**

*HEAD OFFICE, MONTREAL,*

Sir A. T. Galt,                      Edward Rawlings,  
*President.*                                      *Managing Director.*

Why do without Insurance against Accident ?

Insurance against Accident the cheapest insurance in the world. \$10,000 Insurance and \$50 Weekly Indemnity, costs but \$50 a year in the preferred class, smaller amounts proportionately. No permits required for ocean travel.

For further particulars send to, or call upon.

**MEDLAND & JONES,**

**General Agents,**

Equity Chambers, Cor. Victoria & Adelaide Sts.,

**TORONTO.**

a nave 170 feet long, 40 feet wide and 56 feet high, with pier and arches, triforium and rich ceiling. The side aisles are 180 feet long by 20 feet wide, and 48 feet high, with a gallery at the west end. The building was commenced in the year 1845, and finished in 1847. The tower and spire is 250 feet in height.

#### THE METROPOLITAN METHODIST CHURCH.

This fine structure, opposite the St. Michael's Cathedral, is the principal Methodist Church in Toronto, and is situated in the centre of Magill Square, between Bond and Church Streets, the square having a frontage of 248 feet by 552 feet. The architecture is of early French style, and is an ornament to the city, as well as a credit to the Methodists.

The material used is white brick, relieved with cut stone dressings. The dimensions of the main building is 72 by 128 feet, the chapel in the rear being 63 by 63 feet, over which are large and commodious class and committee rooms. In front of the church is a massive tower, 29 feet square and 180 feet in height to top of pinnacles; on either side, at the junction of the main building with the chapel, are two smaller towers, 16 feet square by 122 feet high. The roof is covered with slate of variegated bands.

---

**T. CLAXTON,**

197 Yonge Street, Toronto.

Importer and Dealer in

**Musical Instruments**

**SHEET MUSIC & MUSIC BOOKS.**

---

*Agent for J. W. Pepper's Band and  
Orchestra Music.*

---

**Agent for the Mechanical Organette, Autophone, and  
Roller Organ, also the music for these  
Instruments.**

---

**Band Instruments,**

**Violins, Violas, Cellos,**

**Double Basses, Guitars,**

**Banjos, Tambourines,**

**And everything in the musical line.**

---

*Liberal Discount to the Trade and Agents.*

---

**THOS. CLAXTON,**

**197 Yonge Street.**

**Telephone No. 239**

The church will seat comfortably 1,800, but will contain 2,500 persons.

### THE FREE LIBRARY

Stands at the north-east corner of Church and Adelaide Streets, and was formerly the Mechanics' Institute. In 1883 the whole property of the latter was handed over to the city in trust, and the books therein have formed the nucleus which will doubtless be one of the most useful of the many educational institutions in the city. There are two branch libraries in connection with the central one, the first being located in St. Paul's Ward, for the accommodation of residents in the northern part of the city, and the other in St. Andrew's Hall, for the benefit of those in the west end.

### ST. JAMES' CATHEDRAL.

This fine structure is the principal Episcopal Church in Toronto, and is the fourth church which has occupied the same site, the last one having been burnt in 1849. It is of early English Gothic architecture, and is beautifully executed. The internal effect is somewhat marred by the heavy wooden galleries, destined probably in time to make way for something lighter, or probably total removal. The corner-

LIFE INSURANCE AT COST.  
**MUTUAL RESERVE FUND**  
 LIFE ASSOCIATION.

HEAD OFFICE FOR CANADA:

**63 King Street East, Toronto.**

E. B. HARPER, - PRESIDENT.

**Central Trust Company of New York, Trustee  
Reserve Fund.**

This Trust Company has \$16,000,000 assets ; \$2,400,000  
Capital and Surplus.

~~~~~

Total Number of Certificates issued.....	35,000
Total Amount of Insurance Written..	\$136,000,000
Assets, over	\$400,000
Reserve Fund	\$350,000
Average Daily New Business, over	\$200,000
Losses Paid	\$750,000
One Mortuary Assessment produces	\$130,000
Amount Deposited with Insurance Department, N.Y	\$100,000
Amount Deposited at Ottawa	\$50,000

J. D. WELLS, General Manager.

stone of the present building was laid on the 20th of November, 1850. The extreme length is 200 feet, and 105 feet wide.

During the year 1873, the massive tower was completed, making it 150 feet 3 inches in height. The handsome side porches and the pinnacles on the west were also completed during the same year. The spire is 139 feet 9 inches high, and the wrought iron vane 16 feet making a total height from the ground, 306 feet, being several feet higher than Trinity Church, New York, and the highest in America. The total cost has amounted to about \$166,000, including the peal of bells.

In 1875 the celebrated Chiming and Illuminated Clock, which took first prize at the International Exhibition at Vienna, was purchased from J. W. Benson, of London, England, by the citizens of Toronto, and presented to the Dean and Churchwardens of St. James' on Christmas Eve, 1876. The movement of the clock, next to that of Westminster, is the largest in the world, and in point of quality of material and finish of workmanship, is unequalled by any. The clock plays the Cambridge chimes on the smaller bells every quarter of an hour, and strikes to the hour of the day on the larger bell. In 1876 the site was enclosed with a handsome new fence, set on stone.

The Old Reliable Brands

“CABLE”

—AND—

“EL PADRE.”

—:O:—

PRIZE MEDALS

*Paris, 1867 ; Centennial, 1876, and at
several Provincial Exhibitions*

AGAINST THE WORLD.

Manufactured only by

S. DAVIS & SONS,

Toronto Branch,
34 Church Street,

Montreal.

ST. LAWRENCE HALL.

Some distance east of the Cathedral stands the above, a very substantial building in the semi-classic style of architecture, though its beauties are greatly concealed from view, in consequence of abutting abruptly on the street. The principal front is on King Street.

THE TORONTO POST OFFICE

Is situated on Adelaide Street East, facing Toronto Street, and was opened to the public on Monday, 20th April, 1874. The style of architecture is Italian. It is 75 feet in front by 60 feet in depth, and 66 feet to the eaves, but a dome carries it 35 feet higher. The building is of richly wrought Ohio stone, three stories high, with a basement, and a lofty attic in a Mansard roof. The front elevation is composed of a central brick, which is relieved with complex columns and pilasters, with polished caps and marble bases, and moulded cornices at heights corresponding with each floor. On each side of the central break is a recess bay, and beyond, at each outer angle, a tower having in-riated pilasters and a continuation of the cornices as on the pilasters of the central break. In the rear of the main building is another, one story high, with basement.



R. PARKER & CO.,
DYERS AND CLEANERS

OFFICES :

NO. 203 YONGE STREET, 339 QUEEN ST. WEST,

NO. 225 QUEEN STREET EAST,

TORONTO.

4 JOHN STREET WEST, HAMILTON.

Works and Head Office, 755 to 759 Yonge St., Toronto.

Ladies' and Gents' Garments Cleaned and Dyed

SEND FOR PAMPHLET.

Arriving on Yonge Street, the visitor turns South, and at the corner of Front and Yonge Street passes the

CUSTOM HOUSE.

This is a superb building in the Italian style of architecture, very much ornamented, having entablatures representing great travellers, and the arms of many of the principal trading cities of the mother country, and elsewhere. In the rear are the Receiving Houses.

There are other places in Toronto which will well repay a visit, among which are the Exhibition Rooms of the Ontario Society of Artists, 14 King Street west, Manning's New Arcade, King Street west, and the Grand Opera House, under the able management of Mr. O. B. Sheppard.

THEATRES AND PUBLIC HALLS.

GRAND OPERA HOUSE—Adelaide street west.

ST. LAWRENCE HALL—Market Buildings, King street east.

ST. ANDREW'S HALL—St. Andrew's Market, Richmond street west.

SHAFTESBURY HALL—Y. M. C. A. Buildings, Queen street west.

ALBERT HALL—189 Yonge Street.

Grand Opera House,

ADELAIDE ST. WEST.

The Only First-Class Place of Amusement in Toronto.

Open Every Evening during the Theatrical Season.

O. B. SHEPPARD, - MANAGER.

CAB TARIFF. TORONTO.

Two Horse Cabs - \$1 00 per hour

(Over four passengers, 25c. for each adult per hour)

One Horse Cabs - - 60c. per hour

NIGHT TARIFF—From 1st May to 31st October inclusive, from 10 p.m. to 12 p.m., the charge for cabs shall be one-half more than above tariff; and after midnight to 6 a.m., double the above tariff; and from 1st Nov. to 30th April inclusive, from 9 p.m. to 12 p.m., and after midnight to 6 a.m., the same additional charges.

CHILDREN—No fare charged for children under 8 years in charge of an adult; over 8 years and under 12, half price; over that age, full fare.

BAGGAGE—One trunk, and articles that may be placed inside cab, free. Each article placed outside, 5 cents.

Half fare allowed on return if detention exceeds 10 minutes and full fare if detention exceeds 15 minutes.

80 KING STREET WEST.



21 to 23 SHEPPARD STREET.

ROBT. BOND,
Hack, Coupe & Livery Stables,

80 King St. West and 21 to 23 Sheppard St.

First-Class Hacks and Coupes, also Livery. Tel. phone
communication from Hotel Office to Stables.

R. BOND, Prop.

Hacks at Regular City Tariff.

POSTAGE RATES.

LETTERS to any place in Canada or the United States, for each ½ oz	3 cents.
Newfoundland, for each ½ oz	5 "
Great Britain, " "	5 "
City or Drop, " "	1 "
Yorkville, Don Mount and Parkdale, each ½ oz	1 "
POST CARDS, Canada and United States	1 "
Great Britain	2 "
BOOKS, Canada and United States (limit 5 lbs.), for each 4 oz	1 "
Great Britain, for each 2 oz	1 "
NEWSPAPERS, Canada and United States, for each 4 oz	1 "
Great Britain, for each 2 oz	1 "
PARCEL, Canada (limit 5 lbs.), for each 4 oz	6 "
(Parcels to Manitoba must not exceed 2 lbs. 3 oz. None to Great Britain or United States.)	
SAMPLES, not exceeding ½ lb., to any part of Canada, for each 4 oz	1 "
United States, not exceeding 10 oz.	10 "
Great Britain, not exceeding 8 oz., 2c. for first four oz., 1c. for each additional oz.	

REGISTRATION.

Letters, Canada, each	2 cents.
" United States, each	5 "
" Great Britain, "	5 "
Books, " "	5 "
Parcels, Canada "	5 "
Samples, " "	5 "

FOREIGN POSTAGE RATES.

Austria, Belgium, Denmark, Egypt, France, Germany, Gibraltar, Greece and Ionian Isles, Italy, Japan, Malta, Netherlands, Norway, Portugal, Russia, Spain, Sweden, Switzerland, Turkey—Letters, 3c. every ½ oz.; Post Cards, 2c. each; Newspapers, 2c. each 4 oz.; Books, 1c. each 2 oz. Registration, 5c.

Australia, except New South Wales, Victoria and Queenstown—Letters, 7c. each ½ oz.; Books, 8c. each 2 oz.—New South Wales, Victoria, Queensland, New Zealand—Letters, 15c. each ½ oz.; Newspapers, 4c. each 4 oz.; Books, 6c. each 2 oz.; Registration, 15c.

Established 40 years.

Established 40 years

SAMO'S
FURNITURE FACTORY AND WAREROOMS,
189 Yonge Street, Toronto.

Having the very best facilities for manufacturing, we
can offer great inducements to the public
who may be in want of

FURNITURE

Our \$50 Parlor Suites

—AND—

Our \$35 Bedroom Suites

Have taken the lead over every other house in the city
We defy competition.

WAREROOMS,

FACTORY,

189 Yonge Street 195 Yonge Street

N.B.—Ordered Work a Specialty.

VALUE OF FOREIGN CURRENCY

(As used by the Customs Department.)

COUNTRY.	MONETARY UNIT.	VALUE.
Austria	Florin	40,1 10
Belgium	Franc	19,3 10
Bolivia	Boliviano	81,2 10
Brazil	Milreis of 1000 reis.	54,6 10
British Possessions in North America	Dollar	1 00
Cuba	Peso	93 2 10
Chili	Peso	91,2 10
Denmark	Crown	26,8 10
Ecuador	Peso	81,2 10
Egypt	Piaster	94,9 10
France	Franc	19,3 10
Great Britain	Pound Sterling	4 86,2 3
Greece	Drachma	19,3 10
German Empire	Mark	23,8 10
Japan	Yen	87,6 10
India	Rupee of 16 annas	38,6 10
Italy	Lira	19,3 10
Liberia	Dollar	1 00
Mexico	Dollar	88,2 10
Netherlands	Florin	40,2 10
Norway	Crown	26,9 10
Peru	Sol	81,2 10
Portugal	Milreis of 1000 reis.	1 08
Russia	Rouble of 100 copecks	65
Sandwich Islands	Dollar	1 00
Spain	Peseta of 100 centimes	19,3 10
Sweden	Crown	26,8 10
Switzerland	Franc	19,3 10
Tripoli	Mahhub of 20 piasters	73,3 10
Turkey	Piaster	94,4 10
U. S. of Columbia	Peso	81,2 10
Venezuela	Bolivar	19,3 10

Established 1856.

Established 1856.

Queen's Wharf Coal & Wood Yard

P. BURNS,

WHOLESALE AND

Retail Dealer in Wood,

AND ALL KINDS OF

Anthracite and Bituminous Coal.

HEAD OFFICE AND YARD :

COR. FRONT AND BATHURST ST.

OFFICE AND YARD :

Foot of Yonge St.

ORDER OFFICES :

51 King St. East. 532 Queen St. West.

Telephone Communication between all Offices.

Established 29 Years.

BROWN BROS.,

STATIONERS, BOOKBINDERS,

Account Book Manufacturers, Etc.

66 & 68 King Street East, Toronto.

ACCOUNT BOOKS—Special attention given to this department. Large Stock always on hand. Special patterns (ruled and printed) made to order for Banks, Railways, Insurance & Loan Companies, Merchants, Municipalities, Registrars, etc. Paper of the best quality used. Material for Binding selected with the greatest possible care. Most skillful workmen employed, ensuring the best workmanship with great strength and durability at satisfactory prices.

STATIONERY—A most complete assortment of Mercantile, General and Fancy Stationery always on hand, selected from the first producers of the world at lowest prices.

BOOKBINDING—In every style of the art—unsurpassed for Style, Durability, and moderate charges.

LEATHER GOODS—Ladies' Hand Bags, Bill Cases, Wallets, Pocket Books, Letter and Card Cases, Portfolios. Silver Medals at last exhibitions for leather and plush goods.

DIARIES—Office and Pocket—22nd year of publication—160 Varieties, all Styles and Prices.

BROWN BROTHERS,

Manufacturing Stationers,

TORONTO.

TURKISH BATHS,

176 King Street West,

Near Simcoe Street, _____ **TORONTO.**

LADIES.

Monday, Wednesday and Friday Mornings,
from 10 a.m. to 1 p.m. Tickets \$1 00:
or Thirteen for \$10.

Closing at Two o'clock.

GENTLEMEN.

Other Mornings and Every Afternoon, \$1 00
From 6 to 9 p.m., 75 cents.

**The Largest Marble Plunge Bath on this
Continent.**

**Soap Wash, with Hot or Cold Shower and Plunge
Bath, 50 Cents.**

T. COOK,

**For many years Proprietor of the Montreal
Turkish Baths.**

CHIROPODIST.

ESTABLISHED 1886.

OLDEST HOUSE IN THE TRADE

J. E. ELLIS & CO.,

Manufacturing Jewellers

PRACTICAL WATCHMAKERS.

SPECIALTIES:

DIAMONDS,

FINE WATCHES

FINE JEWELLERY

STERLING SILVERWARE

FRENCH CLOCKS

FRENCH BRONZES

STOCK THE LARGEST. QUALITY THE BEST.
PRICES THE LOWEST.

The Members of the Firm being practical Men, devote
special attention to the repairing of Fine
Watches, Jewellery, etc.

J. E. ELLIS & CO.,

1 King Street East. Cor. Yonge Street

TORONTO.